



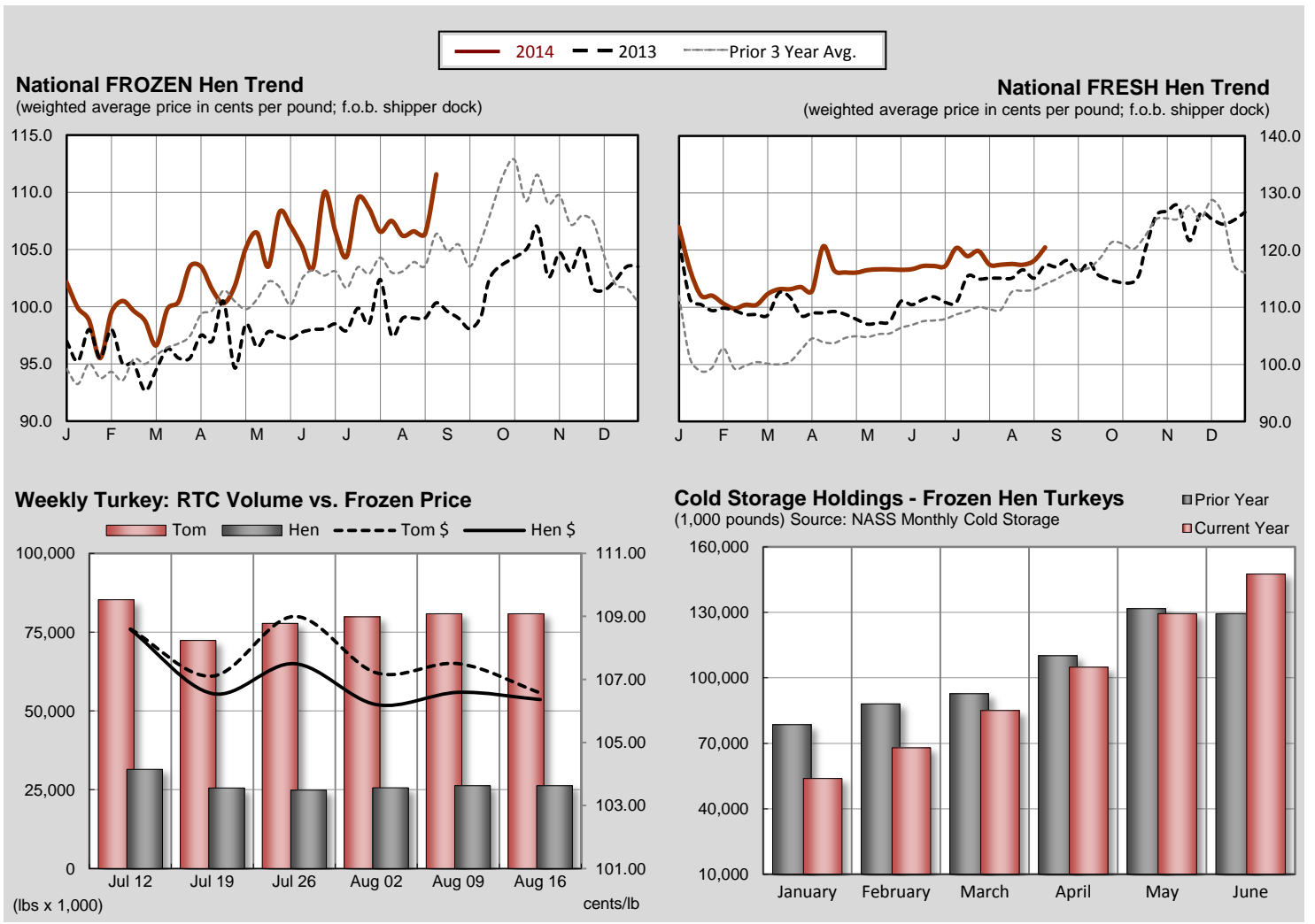
FROZEN Whole Body Turkeys - commodity pack or equivalent; minimum 10,000 lb lots; current negotiation for delivery within two weeks.

| U.S. Grade A - FROZEN | Current Week | | Last Week | | Last Year | | July Averages | | |
|-------------------------|---------------------|-------------------|--------------------|-------------------|--------------------|-------------------|---------------|------------|-----------|
| | wtd avg (cents/lb) | volume (000 lbs.) | wtd avg (cents/lb) | volume (000 lbs.) | wtd avg (cents/lb) | volume (000 lbs.) | This Month | Last Month | Last Year |
| 8-16 lb. (Hens) | 111.57 | 42 | 106.36 | 122 | 100.33 | 180 | 108.56 | 107.18 | 99.09 |
| 16-24 lb. (Toms) | 109.50 ¹ | | 106.57 | 84 | 100.14 | 140 | 108.73 | 107.53 | 98.20 |

¹ based on offers.

FRESH Whole Body Turkeys - with timers; for delivery within the next seven days.

| U.S. Grade A - FRESH | Current Week | | Last Week | | Last Year | | July Averages | | |
|--------------------------------|--------------------|-------------------|--------------------|-------------------|--------------------|-------------------|---------------|------------|-----------|
| | wtd avg (cents/lb) | volume (000 lbs.) | wtd avg (cents/lb) | volume (000 lbs.) | wtd avg (cents/lb) | volume (000 lbs.) | This Month | Last Month | Last Year |
| Priced At Time Of Sale: | | | | | | | | | |
| 8-16 lb. (Hens) | 120.48 | 117.5 | 118.14 | 151.5 | 117.38 | 119.0 | 119.45 | 117.22 | 115.12 |
| 16-24 lb. (Toms) | 120.57 | 105.0 | 117.79 | 145.0 | 116.16 | 73.0 | 119.38 | 117.30 | 113.06 |
| Price To Be Determined: | | | | | | | | | |
| 8-16 lb. (Hens) | -- | 2.0 | -- | 2.0 | -- | 2.0 | -- | -- | -- |
| 16-24 lb. (Toms) | -- | 2.0 | -- | 2.0 | -- | 2.0 | -- | -- | -- |



Source: USDA AMS Livestock, Poultry & Grain Market News; www.ams.usda.gov/pymhomepage