



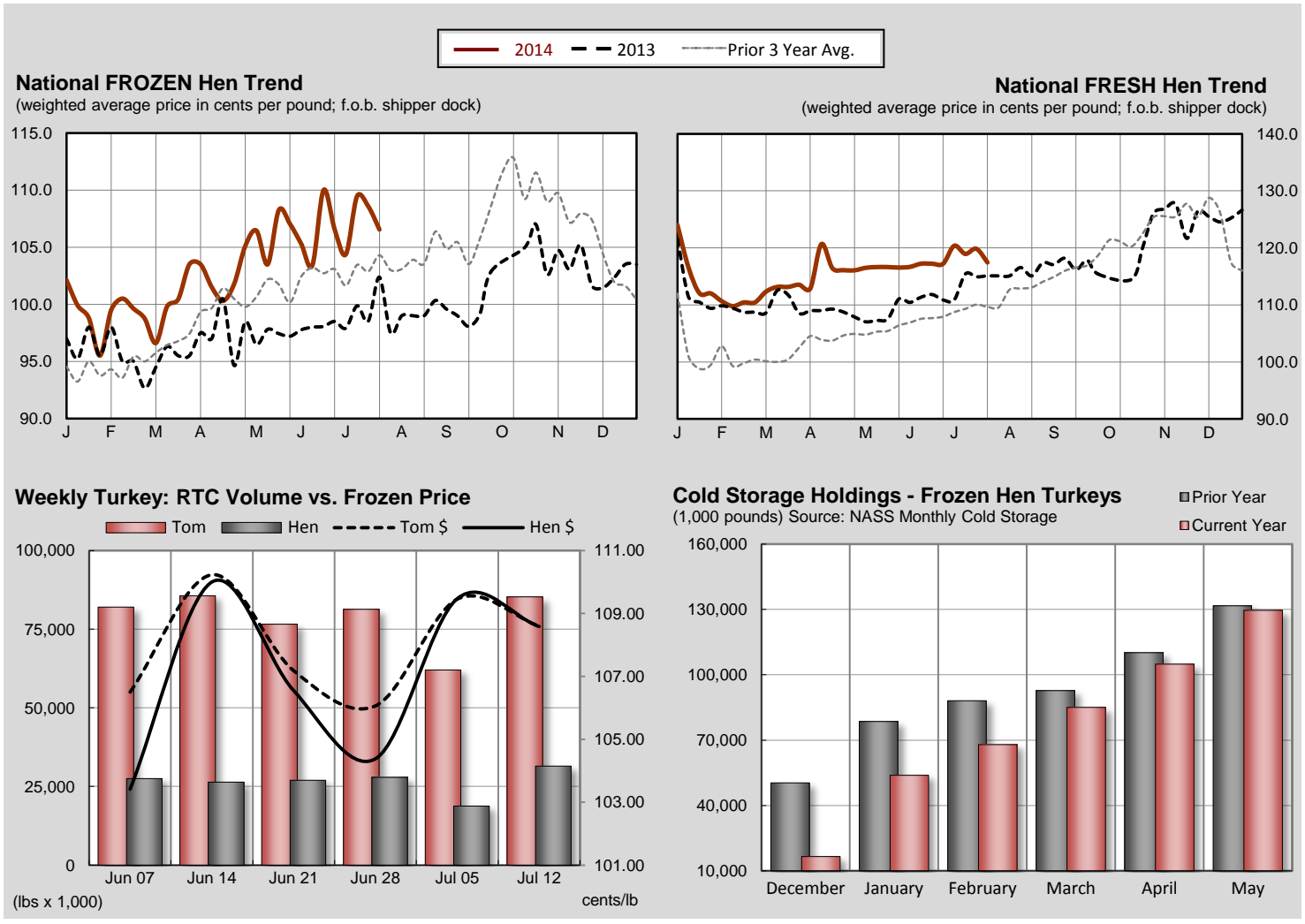
FROZEN Whole Body Turkeys - commodity pack or equivalent; minimum 10,000 lb lots; current negotiation for delivery within two weeks.

U.S. Grade A - FROZEN	Current Week		Last Week		Last Year		June Averages		
	wtd avg (cents/lb)	volume (000 lbs.)	wtd avg (cents/lb)	volume (000 lbs.)	wtd avg (cents/lb)	volume (000 lbs.)	This Month	Last Month	Last Year
8-16 lb. (Hens)	106.55	265	108.59	41	102.37	1,271	107.18	106.15	98.18
16-24 lb. (Toms)	107.10	286	108.60 ¹		102.27	215	107.53	106.13	97.11

¹ based on offers.

FRESH Whole Body Turkeys - with timers; for delivery within the next seven days.

U.S. Grade A - FRESH	Current Week		Last Week		Last Year		June Averages		
	wtd avg (cents/lb)	volume (000 lbs.)	wtd avg (cents/lb)	volume (000 lbs.)	wtd avg (cents/lb)	volume (000 lbs.)	This Month	Last Month	Last Year
Priced At Time Of Sale:									
8-16 lb. (Hens)	117.44	164.0	119.84	124.0	115.09	125.0	117.22	116.64	111.21
16-24 lb. (Toms)	117.28	155.0	119.81	115.0	112.76	79.0	117.30	116.57	109.85
Price To Be Determined:									
8-16 lb. (Hens)	--		--	2.0	--	2.0	--	--	--
16-24 lb. (Toms)	--		--	2.0	--	2.0	--	--	--



Source: USDA AMS Livestock, Poultry & Grain Market News; www.ams.usda.gov/pymhomepage