



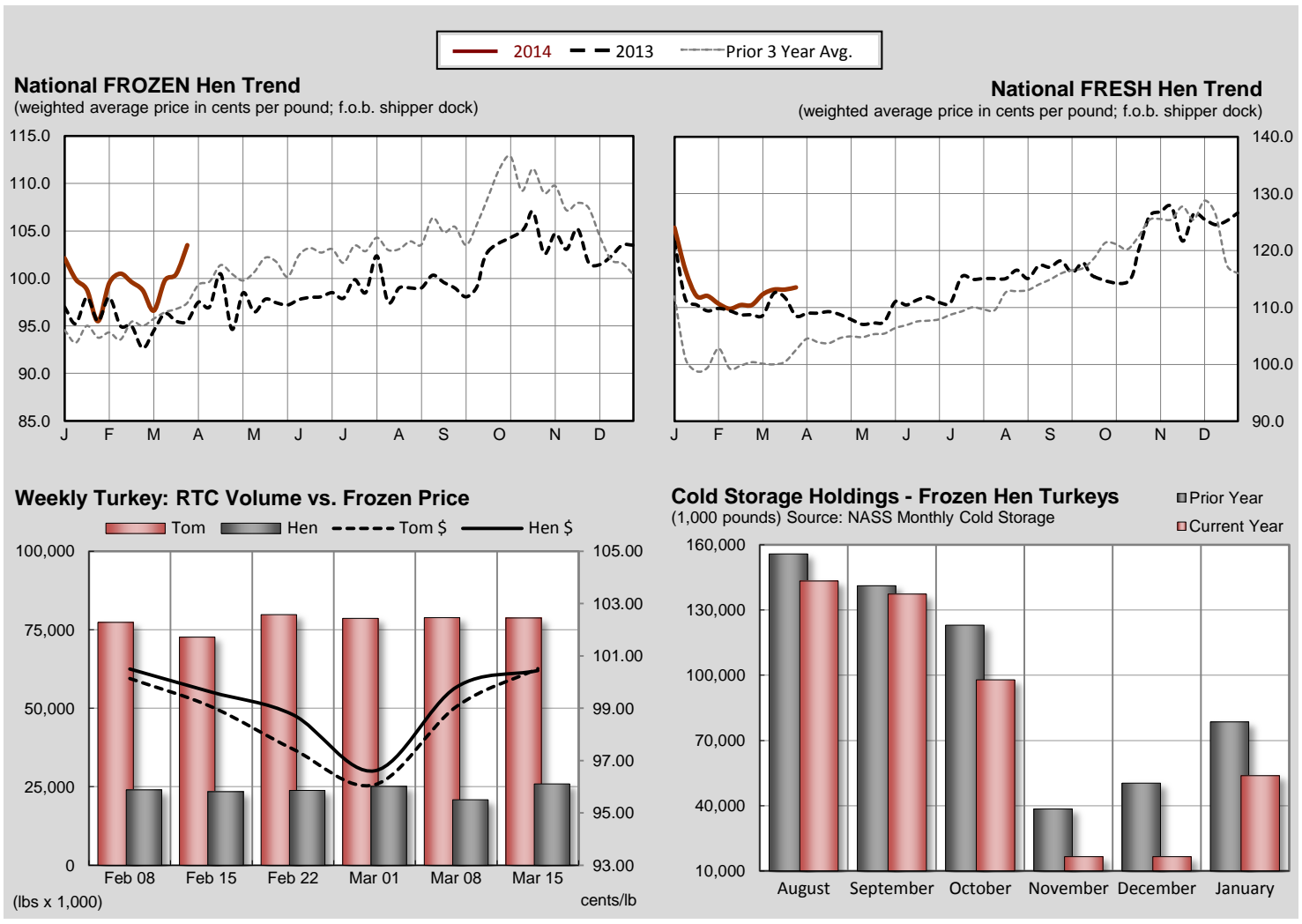
FROZEN Whole Body Turkeys - commodity pack or equivalent; minimum 10,000 lb lots; current negotiation for delivery within two weeks.

U.S. Grade A - FROZEN	Current Week		Last Week		Last Year		February		
	wtd avg (cents/lb)	volume (000 lbs.)	wtd avg (cents/lb)	volume (000 lbs.)	wtd avg (cents/lb)	volume (000 lbs.)	This Month	Last Month	Last Year
8-16 lb. (Hens)	103.50 ¹		100.44	1,246	95.50	20	99.88	99.78	95.00
16-24 lb. (Toms)	102.60 ¹		100.51	1,203	94.50	10	98.13	97.16	95.30

¹ based on offers.

FRESH Whole Body Turkeys - with timers; for delivery within the next seven days.

U.S. Grade A - FRESH	Current Week		Last Week		Last Year		February		
	wtd avg (cents/lb)	volume (000 lbs.)	wtd avg (cents/lb)	volume (000 lbs.)	wtd avg (cents/lb)	volume (000 lbs.)	This Month	Last Month	Last Year
Priced At Time Of Sale:									
8-16 lb. (Hens)	113.53	103.0	113.15	103.0	108.53	298.6	110.12	119.71	108.85
16-24 lb. (Toms)	112.23	47.0	112.33	51.0	108.30	194.0	108.80	117.85	106.78
Price To Be Determined:									
8-16 lb. (Hens)	--	2.0	--	2.0	--	60.0	--	--	--
16-24 lb. (Toms)	--	2.0	--	2.0	--	60.0	--	--	--



Source: USDA AMS Livestock, Poultry & Grain Market News; www.ams.usda.gov/pymhomepage