



USDA Weekly Retail Chicken Feature Activity

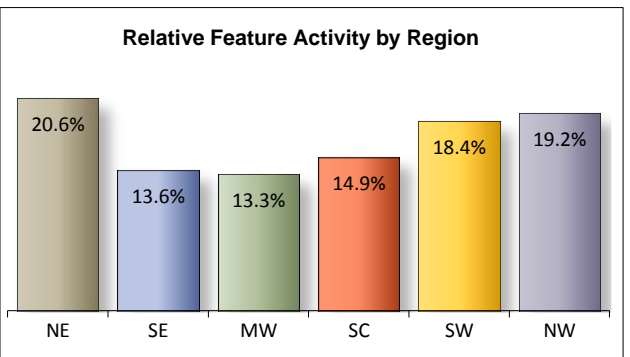
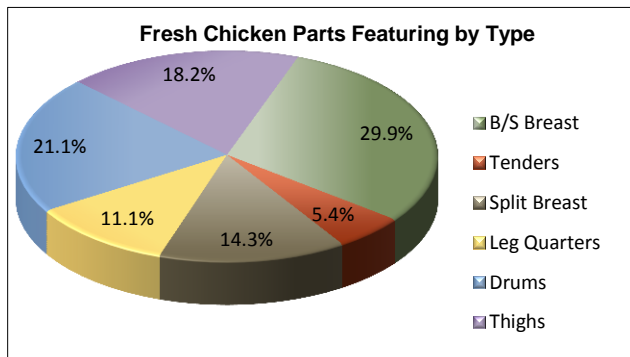
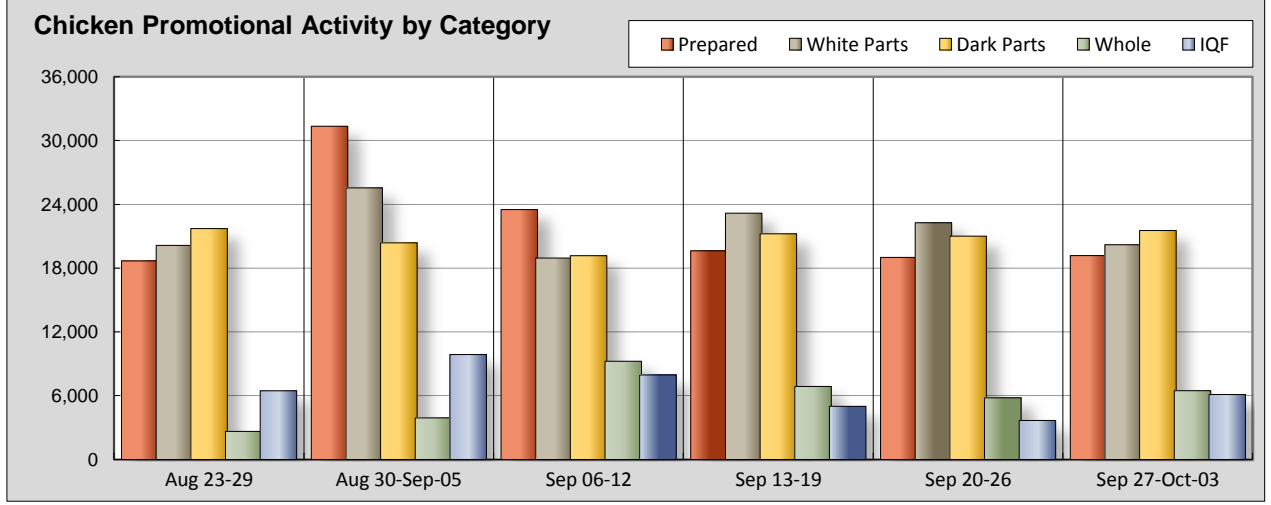
Advertised Prices for Chicken to Consumers at Major Retail Supermarket Outlets during the period of 09/27 thru 10/03.
 (prices in dollars per pound, fresh tray-pack product unless otherwise noted)

Fri. Sep 27, 2013

NATIONAL SUMMARY						
	THIS WEEK		LAST WEEK		LAST YEAR	
Feature Rate ^{1/}	89.0% of 23,200 outlets		88.5% of 23,200 outlets		95.0% of 22,500 outlets	
Special Rate ^{4/}	17.0%		10.4%		15.1%	
Activity Index ^{2/}	73,710		72,270		77,070	
WHOLE BIRD:	Stores ^{3/} Wtd Avg		Stores /3 Wtd Avg		Stores /3 Wtd Avg	
bagged fryer	3,940	1.19	2,610	1.10	4,590	0.99
cut-up fryer	870	1.53	1,020	1.65	1,090	1.45
bagged roaster	1,140	1.38	1,720	1.16	2,320	1.20
Cornish (frs/frz)	530	2.52	460	2.35	340	2.26
PARTS:						
Bnls/Sknls Breast						
regular pack	4,260	3.21	5,310	3.07	7,910	3.25
value pack	5,420	2.90	3,840	2.44	5,880	2.37
thin sliced	940	3.54	1,840	4.13	2,200	3.81
marinated	50	3.29	200	3.09	230	3.24
Breast Tenders						
regular pack	1,370	3.35	2,600	3.62	2,550	3.72
value pack	570	3.01	120	3.02	1,330	2.90
Split, bn-in Breast						
regular pack	2,060	1.84	2,840	1.78	1,630	1.69
value pack	3,050	1.58	3,590	1.41	2,490	1.40
Whole Wings	2,490	2.47	1,940	2.50	850	1.95
Leg Quarters						
tray pack	2,400	0.95	2,300	1.07	2,790	1.07
bagged	1,550	0.80	1,130	0.74	2,580	0.63
Legs	430	1.37	40	1.04	260	1.32
Thighs						
regular pack	2,070	1.54	1,350	1.53	1,850	1.36
value pack	4,440	1.16	5,730	1.23	4,420	1.16
Drumsticks						
regular pack	2,370	1.44	2,400	1.59	1,670	1.40
value pack	5,180	1.13	5,810	1.20	5,720	1.12
Bnls/Sknls Thighs						
regular pack	1,590	2.61	1,650	2.56	870	2.66
value pack	1,520	2.60	610	2.53	1,680	2.57
9-pc Combos						
drum-thigh-breast	10	0.99	270	1.53	30	1.39
drum-thigh-wing	150	1.21	190	1.62	310	1.52
IQF						
B/S Breast	4,000	2.57	1,580	2.32	2,930	2.39
Tenders	1,820	2.63	1,180	2.45	720	2.54
Wings	220	2.10	510	2.49	270	2.65
Party Wings	80	2.42	410	3.46	810	2.25

This Week's Chicken Feature Highlights

Feature activity for retail chicken gains slight momentum this week. The presence of 'no price' incentives moves higher as shoppers looking for a bargain will have an easier time. Bagged fryers are the highlight of the whole birds with an increase also seen in the number of Cornish ads. Overall white parts are less visible this week but value pack B/S breasts and tenders can still be found. Dark parts hold their place in circulars as bulk pack B/S thigh increase in offer. In the freezer section, IQF gets a much needed boost from B/S breast and tenders. Shoppers on the go will have no problem grabbing an 8 piece, baked or fried, which lead the deli sector this week. Specialty chicken drop from view while Organic takes a jump in offer thanks to B/S breasts and whole birds.



All report information gathered from publicly available sources including store circulars, newspaper ads, and retailer websites.

^{1/} **Feature Rate:** the amount of sampled stores advertising any reported chicken item during the current week, expressed as a percentage of the total sample. ^{2/} **Activity Index:** a measure of the absolute frequency of feature activity equal to the total number of stores for each advertised chicken item (e.g., a retailer with 100 outlets featuring 3 chicken items has an activity index of 300). ^{3/} **Stores/Avg:** the total number of advertising outlets and the weighted average price weighted by the respective number of outlets. ^{4/} **Special Rate:** the percentage of sampled stores with a no-price promotion (e.g., buy 1, get 1 free, etc.)



USDA Weekly Retail Chicken Feature Activity

Advertised Prices for Chicken to Consumers at Major Retail Supermarket Outlets during the period of 09/27 thru 10/03.

(prices in dollars per pound, fresh tray-pack product unless otherwise noted)

Fri. Sep 27, 2013

		NORTHEAST U.S. (CT,DE,MA,MD,ME,NH,NJ,NY,PA,RI,VT)				SOUTHEAST U.S. (AL,FL,GA,MS,NC,SC,TN,VA,WV)				MIDWEST U.S. (IA,IL,IN,KY,MI,MN,ND,NE,OH,SD,WI)			
Feature Rate ^{1/}		91.2% of 4,600 sampled outlets				92.4% of 6,100 sampled outlets				85.6% of 4,200 sampled outlets			
Special Rate ^{4/}		28.8% of stores w/ no-price promotions				15.6% of stores w/ no-price promotions				12.8% of stores w/ no-price promotions			
Activity Index ^{2/}		Activity Index = 13,040				Activity Index = 11,960				Activity Index = 7,480			
WHOLE BIRD:		Price Range		Stores	Wtd Avg	Price Range		Stores	Wtd Avg	Price Range		Stores	Wtd Avg
				4/				4/				4/	
	bagged fryer	0.99 - 1.49		760	1.15	0.98 - 1.49		880	1.24	0.88 - 1.49		920	1.17
	cut-up fryer	1.48 - 1.69		720	1.53	1.39		60	1.39	1.58 - 1.79		20	1.66
	bagged roaster	0.99 - 1.69		540	1.29	1.49		440	1.49	1.29 - 1.69		110	1.36
	Cornish (frs/frz)	1.99 - 2.49		470	2.48					2.54 - 3.50		30	3.04
PARTS:		Processor Brand	Store Brand	Stores	Wtd Avg	Processor Brand	Store Brand	Stores	Wtd Avg	Processor Brand	Store Brand	Stores	Wtd Avg
Bnls/Sknls Breast													
	regular pack	1.69 - 3.99	1.69 - 2.99	770	2.97	2.29 - 3.99	1.98 - 3.99	1,030	3.75	1.87 - 4.99	1.59 - 2.29	810	2.78
	value pack	2.99 - 3.49	1.77 - 3.49	1,380	2.59		1.99 - 3.99	1,160	3.88	3.49	1.66 - 2.99	580	2.28
	thin sliced	3.59 - 3.99	3.29 - 3.99	470	3.70	3.99	3.19	120	3.89		2.49 - 3.49	250	3.02
	marinated		5.49	10	5.49						2.99	30	2.99
Breast Tenders													
	regular pack	3.53 - 3.89	2.79 - 2.99	660	3.23	3.99	2.99 - 3.99	330	3.94	2.49 - 3.88	2.48 - 3.29	50	3.01
	value pack		2.99 - 3.49	190	3.09		2.99 - 3.49	70	3.16		2.99 - 3.19	40	3.14
Split, bn-in Breast													
	regular pack	1.39 - 3.49	1.19 - 3.49	800	2.17	1.49 - 1.59	1.48	50	1.50	1.29 - 1.89	0.99 - 1.89	360	1.32
	value pack	1.49 - 1.69	1.18 - 1.99	380	1.50	1.28 - 1.69	0.99 - 1.79	1,530	1.69	1.28 - 1.89	0.99 - 1.79	170	1.38
Whole Wings		2.49	1.78 - 2.99	460	2.61	2.49	1.79 - 2.69	1,160	2.51	2.00 - 2.49	1.99 - 2.59	580	2.32
Leg Quarters													
	tray pack	0.77 - 0.99	0.59 - 1.48	940	0.88		0.69 - 0.99	300	0.93		0.69 - 0.88	30	0.77
	bagged		0.54 - 1.19	190	0.86	0.69	0.39 - 0.98	850	0.84		0.59 - 1.19	210	0.74
Legs			0.98 - 1.59	50	1.14		0.98	20	0.98		0.89 - 1.99	20	1.41
Thighs													
	regular pack	0.98 - 1.99	0.98 - 2.49	830	1.54	0.98 - 1.69	0.99 - 1.19	140	1.21	1.69	0.89 - 1.99	190	1.34
	value pack	0.98 - 1.59		520	1.25	0.98 - 0.99	0.98 - 1.49	1,060	1.06	0.98 - 1.29	0.99 - 1.29	740	1.05
Drumsticks													
	regular pack	0.98 - 2.49	0.99 - 1.59	830	1.54	0.98 - 1.69	0.88 - 1.19	170	1.16	1.69	0.88 - 1.19	150	1.19
	value pack	0.98 - 1.59	0.88 - 1.49	1,090	1.18	0.98 - 1.19	0.79 - 1.49	1,130	1.06	0.98 - 1.29	0.69 - 1.29	770	1.04
Bnls/Sknls Thighs													
	regular pack	2.09 - 2.99	1.99 - 3.49	660	2.73	2.49 - 2.99		110	2.96	1.87 - 4.99	1.99 - 2.69	490	2.42
	value pack		2.99	90	2.99	2.69	2.99	70	2.89		1.98 - 2.49	60	2.35
9-pc Combos													
	drum-thigh-breast												
	drum-thigh-wing					1.18 - 1.39		110	1.22	1.18		20	1.18
IDF	B/S Breast Tenders		2.79	210	2.79		2.17 - 2.40	640	2.38	2.66 - 2.79	1.66 - 2.98	730	2.41
	Wings						2.40 - 2.80	510	2.46	2.66 - 2.79	2.66 - 2.98	70	2.74
	Party Wings		2.24	20	2.24		2.33	10	2.33	2.79		20	2.79
							2.00	10	2.00		2.39	30	2.39



USDA Weekly Retail Chicken Feature Activity

Advertised Prices for Chicken to Consumers at Major Retail Supermarket Outlets during the period of 09/27 thru 10/03.

(prices in dollars per pound, fresh tray-pack product unless otherwise noted)

Fri. Sep 27, 2013

		SOUTH CENTRAL U.S. (AR,AZ,CO,KS,LA,MO,NM,OK,TX,UT)				SOUTHWEST U.S. (CA,HI,NV)				NORTHWEST U.S. (AK,ID,MT,OR,WA,WY)			
Feature Rate ^{1/}		85.3% of 4,200 sampled outlets				87.7% of 2,900 sampled outlets				90.5% of 1,200 sampled outlets			
Special Rate ^{4/}		15.1% of stores w/ no-price promotions				14.6% of stores w/ no-price promotions				5.4% of stores w/ no-price promotions			
Activity Index ^{2/}		Activity Index = 9,740				Activity Index = 8,540				Activity Index = 3,760			
WHOLE BIRD:		Price Range		Stores	Wtd Avg	Price Range		Stores	Wtd Avg	Price Range		Stores	Wtd Avg
				4/	4/			4/	4/			4/	4/
bagged fryer		0.88 - 2.19		770	1.08	0.89 - 2.49		590	1.34	0.99 - 1.19		20	1.09
cut-up fryer		1.39 - 1.49		40	1.47					1.49 - 1.89		30	1.62
bagged roaster		1.49		50	1.49								
Cornish (frs/frz)										2.17 - 3.99		30	2.72
PARTS:		Processor Brand	Store Brand	Stores	Wtd Avg	Processor Brand	Store Brand	Stores	Wtd Avg	Processor Brand	Store Brand	Stores	Wtd Avg
Bnls/Sknls Breast													
regular pack		1.96 - 2.99	1.49 - 3.99	830	2.79	4.99	1.99 - 3.99	320	3.76	3.99	1.88 - 2.49	500	3.53
value pack		2.69 - 3.49	1.77 - 3.49	900	2.74	4.49	1.99 - 2.99	820	2.68	1.88 - 3.49	1.99 - 2.99	580	2.87
thin sliced		4.99	2.29	40	4.11	4.99	2.59	50	3.10	4.99		10	4.99
marinated							1.99	10	1.99				
Breast Tenders													
regular pack		2.99	2.49 - 2.99	250	2.97		2.99	70	2.99	4.99		10	4.99
value pack		2.69 - 2.79	2.99	190	2.85		2.99	70	2.99		2.99	10	2.99
Split, bn-in Breast													
regular pack		1.19 - 1.99	0.99 - 1.49	440	1.43	1.49 - 2.49	0.99 - 1.69	390	2.15	1.66		20	1.66
value pack		0.99 - 1.69	0.98 - 1.69	500	1.31	0.98 - 1.28	1.59 - 1.99	460	1.65	1.49		10	1.49
Whole Wings													
		1.99 - 2.39	1.99 - 2.69	270	2.36		2.33	20	2.33				
Leg Quarters													
tray pack		0.99	0.79 - 0.99	260	0.98		0.69 - 0.99	530	0.90	0.98	0.99 - 1.29	340	1.27
bagged		0.69	0.57 - 0.89	240	0.71		0.59 - 0.69	60	0.68				
Legs													
			0.99 - 1.99	130	1.38	1.99	0.99 - 1.99	140	1.44		1.49	70	1.49
Thighs													
regular pack			1.19 - 1.49	100	1.35	1.99	0.79 - 0.99	750	1.71		1.18 - 1.19	60	1.18
value pack		0.98 - 1.00	0.77 - 1.39	1,040	1.11	1.19 - 1.99	0.99 - 1.99	490	1.31	1.28 - 1.59	0.99 - 1.29	590	1.35
Drumsticks													
regular pack			0.58 - 1.19	290	1.00	1.99	0.79 - 0.99	870	1.60		1.18 - 1.19	60	1.18
value pack		0.98 - 1.00	0.77 - 1.39	1,060	1.08	0.99 - 1.99	0.69 - 1.99	520	1.18	1.28 - 1.59	0.99 - 1.49	610	1.35
Bnls/Sknls Thighs													
regular pack		1.88 - 2.99	1.98 - 2.99	260	2.45		2.99	70	2.99				
value pack			1.98 - 2.99	330	2.23		1.99 - 2.99	650	2.54		2.99	320	2.99
9-pc Combos													
drum-thigh-breast		0.99		10	0.99								
drum-thigh-wing		1.18		20	1.18								
IDF	B/S Breast	1.99	2.30 - 2.99	1,070	2.65	1.99 - 3.19	2.66 - 2.99	1,010	2.71	1.99	1.69 - 2.69	340	2.51
	Tenders	1.99	2.33 - 2.99	640	2.66	1.99	2.66 - 2.99	450	2.72	1.99 - 2.79		150	2.71
	Wings						1.99	170	1.99				
	Party Wings		1.99	10	1.99	2.74		30	2.74				



USDA Weekly Retail Chicken Feature Activity - Prepared Chicken

Advertised Prices for Chicken to Consumers at Major Retail Supermarket Outlets during the period of 09/27 thru 10/03.

(prices in dollars per unit or per pound unless otherwise noted)

Fri. Sep 27, 2013

PREPARED FOODS NATIONAL SUMMARY												
	THIS WEEK		LAST WEEK		LAST YEAR							
Feature Rate ^{1/}	49.9% of 23,200 outlets		43.4% of 23,200 outlets		45.7% of 22,500 outlets							
Activity Index ^{2/}	19,190		19,020		16,750							
	Stores	Wtd Avg	Stores	Wtd Avg	Stores	Wtd Avg						
ROTISSERIE:												
Whole Bird												
< 2 lbs.	4,400	6.01	4,930	5.97	4,380	6.03						
2.1-3.0 lbs.	590	6.92	1,650	6.51	70	8.99						
Whole Breast	320	5.54	10	8.99	40	4.98						
Leg Quarter			20	2.25	260	1.49						
FRIED & BAKED:												
Fried 8-Piece Mix	4,060	6.69	2,260	6.99	3,330	6.99						
Baked 8-Piece Mix	780	6.71	290	6.67	760	6.88						
F/B 8-Piece Dark	210	5.28	70	5.99	460	5.70						
F/B 12-Piece	390	9.02	380	10.02	430	10.04						
Bulk Pack (\$/piece)	500	0.80	380	1.07	610	0.78						
Wings: bone-in	3,000	6.37	3,870	6.05	3,650	5.45						
boneless	1,920	5.23	1,810	5.22	2,110	5.07						
Tenders	2,930	5.44	3,170	5.39	590	5.29						
Strips	80	5.81	140	6.92	60	5.41						
Popcorn	10	5.00	40	3.65								

Prepared Chicken Featuring by Category

Whole Bird Featuring Fresh versus Prepared

Feature Rate Comparison % of Stores w/ Ads by Category

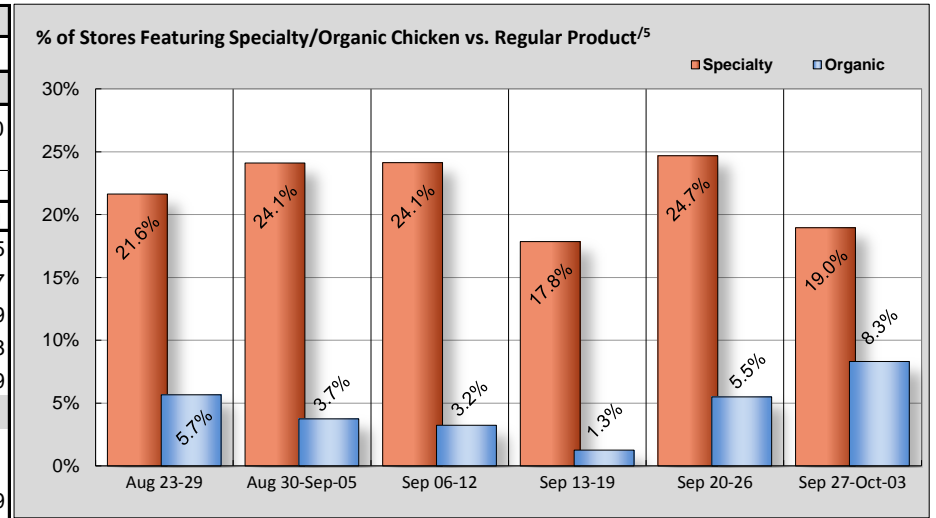
	NORTHEAST U.S.			SOUTHEAST U.S.			MIDWEST U.S.			SOUTH CENTRAL U.S.			SOUTHWEST U.S.			NORTHWEST U.S.		
Feature Rate ^{1/}	47.2% of 4,600 sampled outlets			49.8% of 6,100 sampled outlets			49.6% of 4,200 sampled outlets			45.2% of 4,200 sampled outlets			53.5% of 2,900 sampled outlets			69.9% of 1,200 sampled outlets		
Activity Index ^{2/}	Activity Index = 4,530			Activity Index = 4,290			Activity Index = 2,790			Activity Index = 3,280			Activity Index = 2,930			Activity Index = 1,370		
	price range	stores	wtd avg	price range	stores	wtd avg	price range	stores	wtd avg	price range	stores	wtd avg	price range	stores	wtd avg	price range	stores	wtd avg
ROTISSERIE:																		
Whole Bird																		
< 2 lbs.	4.69 - 9.99	810	5.75	3.99 - 5.99	840	5.57	4.00 - 7.98	1,200	6.08	3.99 - 7.99	840	6.28	4.99 - 6.99	360	6.52	5.00 - 7.98	350	6.27
2.1-3.0 lbs.	4.99 - 8.99	490	6.77	6.99 - 8.99	90	7.96				4.99	10	4.99						
Whole Breast	2.99 - 9.99	310	5.54	5.49	10	5.49												
Leg Quarter																		
FRIED & BAKED:																		
Fried 8-Piece Mix	5.98 - 8.98	1,010	7.05	4.99 - 6.99	1,730	6.45	4.98 - 9.99	500	6.81	4.99 - 8.99	430	6.87	5.99 - 6.99	390	6.42			
Baked 8-Piece Mix	6.99	150	6.99	6.98 - 6.99	250	6.98	4.99 - 7.99	30	6.76	5.99 - 6.99	150	6.19	3.99 - 6.99	200	6.55			
F/B 8-Piece Dark	5.99	60	5.99				4.99	20	4.99	4.99	100	4.99	4.99	20	4.99	4.99	10	4.99
F/B 12-Piece	9.99	10	9.99	8.99 - 12.99	170	10.59	0.92 - 10.99	80	6.42	5.99 - 8.99	130	8.49						
Bulk Pack (\$/piece)	0.69 - 1.00	120	0.98	0.54 - 0.89	90	0.82	0.59 - 0.95	80	0.78	0.69 - 0.89	30	0.78	0.49 - 0.99	130	0.69	0.59 - 0.79	50	0.61
Wings: bone-in	4.99 - 7.99	810	5.89	4.99 - 7.99	290	6.50	4.99 - 7.99	180	6.29	4.99 - 7.99	660	6.55	4.99 - 7.99	600	6.77	4.99 - 6.99	460	6.41
boneless	4.97 - 5.32	250	5.10	4.99 - 6.99	150	6.03	4.66 - 5.32	360	5.05	4.66 - 5.32	350	5.09	4.66 - 6.99	680	5.37	4.66 - 4.99	130	4.69
Tenders	4.99 - 6.49	450	5.43	3.99 - 6.99	670	6.34	4.49 - 5.99	340	5.01	3.99 - 6.99	580	5.31	5.00	550	5.00	5.00 - 5.99	340	5.03
Strips	5.99	50	5.99													4.98 - 6.49	30	5.50
Popcorn	5.00	10	5.00															



USDA Weekly Retail Chicken Feature Activity - USDA Certified Organic and Specialty Chicken
Advertised Prices for Chicken to Consumers at Major Retail Supermarket Outlets during the period of 09/27 thru 10/03.
 (prices in dollars per pound, fresh tray-pack product unless otherwise noted)

Fri. Sep 27, 2013

Feature Rate ^{1/}	NATIONAL SUMMARY					
	SPECIALTY CHICKEN			USDA ORGANIC CHICKEN		
	THIS WEEK	LAST WEEK	LAST YEAR	THIS WEEK	LAST WEEK	LAST YEAR
Activity Index ^{2/}	7,590	9,990	4,800	3,050	2,060	2,670
	Stores Wtd Avg	Stores Wtd Avg	Stores Wtd Avg	Stores Wtd Avg	Stores Wtd Avg	Stores Wtd Avg
Whole Fryer	1,030 1.88	1,640 1.94	760 1.70	710 2.79	240 3.09	250 2.75
Bnls/Sknls Breast	3,700 4.92	2,150 4.74	1,770 4.92	1,270 7.06	600 7.01	1,020 5.57
Breast Tenders	890 6.11	740 4.56	570 4.82	420 8.09	600 7.02	580 3.99
Split, bn-in Breast	270 3.13	260 2.76	150 2.26		40 5.74	10 3.18
Whole Wings	120 2.52	430 2.63	10 2.99		10 3.49	10 2.99
Leg Quarters	60 1.06	420 1.35	10 1.99	-- --	-- --	-- --
Legs		60 2.32	70 2.18			
Thighs	360 1.96	1,030 1.93	600 1.79	70 3.16	30 2.99	
Drumsticks	600 2.08	1,260 2.04	830 1.75	320 2.23	510 2.06	790 2.99
B/S Thighs	560 4.36	2,000 3.04	30 3.49	260 4.23	30 5.99	10 4.59



⁵: % = total store count for Specialty items/by total store count for the same set of regular items.

SPECIALTY	NORTHEAST U.S.			SOUTHEAST U.S.			MIDWEST U.S.			SOUTH CENTRAL U.S.			SOUTHWEST U.S.			NORTHWEST U.S.		
Feature Rate ^{1/}	32.0% of 4,600 sampled outlets			44.9% of 6,100 sampled outlets			18.1% of 4,200 sampled outlets			7.4% of 4,200 sampled outlets			2.2% of 2,900 sampled outlets			3.7% of 1,200 sampled outlets		
Activity Index ^{2/}	Activity Index = 2,250			Activity Index = 2,540			Activity Index = 1,830			Activity Index = 690			Activity Index = 70			Activity Index = 210		
	price range	stores	wtd avg	price range	stores	wtd avg	price range	stores	wtd avg	price range	stores	wtd avg	price range	stores	wtd avg	price range	stores	wtd avg
Whole Fryer	1.49 - 2.49	390	1.96	1.69 - 1.79	110	1.71	1.48 - 2.99	340	1.81	1.69 - 1.99	70	1.94	1.79 - 2.49	20	2.49	1.79 - 1.99	100	1.85
Bnls/Sknls Breast	3.99 - 5.49	680	4.47	3.99 - 5.99	2,300	4.99	3.39 - 5.99	410	4.60	3.99 - 6.39	230	5.49				3.99 - 6.99	80	6.51
Breast Tenders	3.99 - 5.99	430	5.11	3.99 - 4.99	50	4.22	4.99 - 8.99	260	8.11	5.99 - 6.39	150	6.16						
Split, bn-in Breast	1.99 - 4.79	90	2.84				1.89 - 3.29	110	2.82	3.99	30	3.99	3.99	40	3.99			
Whole Wings	2.99	20	2.99	2.99	10	2.99	1.99 - 2.99	90	2.37									
Leg Quarters	1.19	10	1.19				0.98 - 1.48	40	1.05								0.97	10 0.97
Legs																		
Thighs	2.49	90	2.49				1.49 - 2.99	160	1.82	1.18 - 1.99	100	1.70				1.99	10 1.99	
Drumsticks	1.99 - 3.99	290	2.37				1.48 - 3.99	180	1.86	1.18 - 1.99	110	1.72	1.49 - 1.99	10	1.49	1.99	10 1.99	
B/S Thighs	2.89 - 3.69	250	3.54	2.49 - 5.98	70	3.48	2.82 - 5.99	240	5.47									
ORGANIC	10.8% of 4,600 sampled outlets			7.0% of 6,100 sampled outlets			0.5% of 4,200 sampled outlets			5.4% of 4,100 sampled outlets			20.4% of 2,900 sampled outlets			6.9% of 1,200 sampled outlets		
	Activity Index = 1,360			Activity Index = 280			Activity Index = 270			Activity Index = 220			Activity Index = 890			Activity Index = 30		
Whole Fryer	2.42 - 2.99	310	2.53							2.99	80	2.99	2.99	320	2.99			
Bnls/Sknls Breast	5.99 - 6.99	400	6.37	6.99 - 7.58	230	7.49				6.99	140	6.99	4.99 - 8.99	490	7.48	4.99	10 4.99	
Breast Tenders	6.99	150	6.99	6.99 - 8.99	50	7.54	8.79 - 8.99	220	8.97									
Split, bn-in Breast																		
Whole Wings																		
Legs																		
Thighs							2.99	20	2.99				2.99 - 3.29	40	3.29	2.99	10 2.99	
Drumsticks	1.99	250	1.99				2.99	20	2.99				1.99 - 3.29	40	3.29	1.99 - 2.99	10 2.42	
B/S Thighs	4.12	250	4.12				6.99	10	6.99									

Specialty products are produced from chickens raised on an all vegetable diet without antibiotics and are minimally processed. USDA Certified Organic are products grown and processed according to USDA's national organic standards and certified by USDA-accredited State and private certification organizations. For more information, visit <http://www.ams.usda.gov/nop/>.