



TURKEY MARKET NEWS REPORT

ISSN 1522-0575

FRIDAY
MARCH 02, 2012
VOL. 59 NO. 27

U.S. Department of Agriculture	Agricultural Marketing Service	Poultry Programs	Market News and Analysis
--------------------------------	--------------------------------	------------------	--------------------------

NATIONAL TURKEY MARKET-AT-A-GLANCE

DOMESTIC MARKET HIGHLIGHTS

The market on hens and 16-24 lb. toms is steady with steady to firm undertones. Demand light to moderate with inquiry found for deferred shipments. Offerings light to moderate. Frozen basted equivalent offering prices on a national basis for hens 101.00-104.00 cents shipping point and 16-24 lb. toms 101.00-105.00 cents shipping point for current deliveries. Trading heavy on frozen basted equivalent hens at 101.50 and 16-24 lb. toms at 101-101.50 cents shipping point for current deliveries.



The market on tenderloins is mostly steady with strap-in in the strongest position; tom breast meat and the balance of white meat steady to weak with scapula trading at lower prices. Demand light to moderate. Offerings mixed ranging light to heavy, mostly moderate. The market on tom bulk parts is mixed ranging from at least steady on tails to weak on tom full-cut wings due to trading at lower prices, balance of items steady at best. Demand light to moderate. Offerings light to heavy, mostly moderate with tom full-cut wings the most available. The market on thigh meat is steady to instances weak. Demand light to moderate. Offerings mostly moderate. The market on mechanically separated turkey is steady. Demand and offerings light to moderate. Trading light on all items.

EXPORT MARKET HIGHLIGHTS

Trading moderately heavy on tom full-cut wings, balance light. The market on tom full-cut wings is weak in response to trading at lower prices, tails firm, balance of items mostly steady. Demand and offerings light to heavy, mostly moderate.

LIVE TURKEYS SLAUGHTERED W/E 25-Feb-12 (Preliminary)

	Young		Old	Total	
	Hens	Toms			
Head	1,792	2,605	13	2	4,412
Avg Wt	17.07	41.20	24.52	38.23	31.35
Last week	1,671	2,555	16	10	4,252
Same wk yr ago	1,744	2,397	18	4	4,163
Avg Wt	18.07	39.61	24.80	29.21	28.95
To-date/2012*	13,500	19,578	174	66	33,318
To-date/2011*	13,951	20,160	128	39	34,278
% Change YTD	-3%	-3%	36%	69%	-3%
Ready-to-Cook Weight and Dressing Percentage					
Current week	24,473	85,860	244	58	110,635
Last week	22,898	84,900	326	219	108,343
Same wk yr ago	25,211	75,956	346	91	101,604
To-date/2012*	160,172	568,240	3,244	1,392	733,048
To-date/2011*	165,056	561,633	2,426	916	730,031
% Change YTD	-3%	1%	34%	52%	0%
Dressing %	80.0%	80.0%	76.5%	76.5%	

NUMBER OF TURKEYS SLAUGHTERED IN FEDERALLY INSPECTED PLANTS

	W/E 25-Feb-12 (Preliminary)			Old Breeder	Total Turkeys
	-----Young turkeys-----				
	Thousand	Pct chg	Avg Live wt		
North East	597	-11	26.80	(A)	598 26.80
South Atlantic	683	33	39.91	(A)	684 39.91
North Central	2,109	0	34.45	(A)	2,109 34.45
South Central	837	12	20.08	(A)	837 20.08
West	184	-5	29.97	(A)	184 29.97
U.S. total	4,410 (B)	4	31.35	2	4,412 31.35
To-date					
2012*	33,252 (B)			66	33,318
To-date					
2011*	34,239 (B)			39	34,278

(A) Not published to avoid disclosing individual operations.
(B) Number of young banded breeder turkeys included: this week 13,000; for the current year to date* 174,000; for last year to date* 128,000.

*Note: Year to-date totals reflect comparable time periods.

*Note: Year to-date totals reflect comparable time periods.

SAN FRANCISCO PROCESSED TURKEY DELIVERED TO RESTAURANTS AND INSTITUTIONS

	RANGE
TURKEYS Y HENS	144-185
TURKEYS Y TOMS UNDER 22#	141-185
TURKEYS Y TOMS 22-24#	141-185
TURKEYS Y TOMS 24-26#	150-185
TURKEYS Y TOMS 26 LBS & OVER	152-185

SOUTHERN CALIFORNIA (L. A. AREA) PROCESSED TURKEY DELIVERED TO RETAILERS

	RANGE
FRESH TURKEYS Y HENS 8-16#	117-128
FRESH TURKEYS Y TOMS 14-24#	
FROZEN TURKEYS Y HENS 8-16#	105-116
FROZEN TURKEYS Y TOMS 14-24#	105-126
FROZEN TURKEYS Y TOMS 24-28#	114-130

Weekly National Fresh and Frozen Whole Young Turkeys
USDA, Agricultural Marketing Service, Poultry Market News & Analysis

Weighted Average Prices, cents per pound, F.O.B. Shipper Dock Basis - Week Ending March 02, 2012

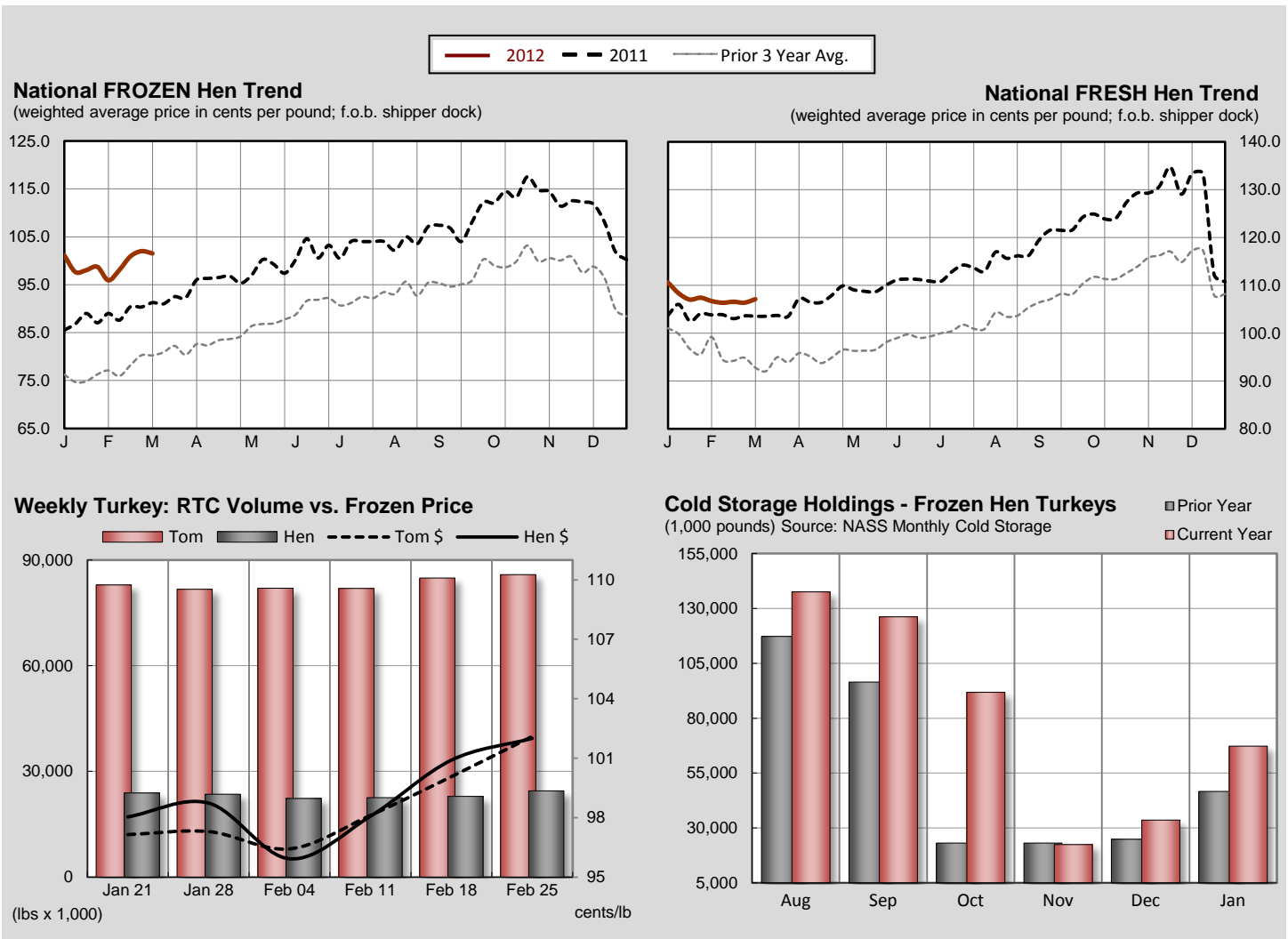
FROZEN Whole Body Turkeys - commodity pack or equivalent; minimum 10,000 lb lots; current negotiation for delivery within two weeks.

U.S. Grade A - FROZEN	Current Week		Last Week		Last Year		January Averages		
	wtd avg (cents/lb)	volume (000 lbs.)	wtd avg (cents/lb)	volume (000 lbs.)	wtd avg (cents/lb)	volume (000 lbs.)	This Month	Last Month	Last Year
8-16 lb. (Hens)	101.52	820	102.00	600	91.25	120	100.15	98.35	89.97
16-24 lb. (Toms)	101.44	919	102.10	954	92.00 ¹		100.17	98.76	90.08

¹ based on offers.

FRESH Whole Body Turkeys - with timers; for delivery within the next seven days.

U.S. Grade A - FRESH	Current Week		Last Week		Last Year		February Averages		
	wtd avg (cents/lb)	volume (000 lbs.)	wtd avg (cents/lb)	volume (000 lbs.)	wtd avg (cents/lb)	volume (000 lbs.)	This Month	Last Month	Last Year
Priced At Time Of Sale:									
8-16 lb. (Hens)	107.10	138.2	106.37	139.5	103.54	120.0	106.50	108.39	103.59
16-24 lb. (Toms)	106.04	65.0	105.27	65.0	102.47	75.0	105.62	108.34	102.24
Price To Be Determined:									
8-16 lb. (Hens)	--	2.5	--	2.5	--	2.0	--	--	--
16-24 lb. (Toms)	--	2.5	--	2.5	--	2.0	--	--	--



NATIONAL YOUNG TURKEY PARTS

INCLUDING BULK MEAT AND FROZEN (UNLESS SPECIFIED), CENTS PER LB., DELIVERED FIRST RECEIVERS, PART AND FULL TRUCKLOTS AS OF 01 MAR 2012.

The market on bulk parts was steady, instances weak on full cut wings for both domestic and export. Demand and offerings light to moderate. The market on white meat was steady to weak and not full tested. Demand was light to moderate. Offerings moderate. Trading was slow to moderate with most movement into export channels. For domestic: fresh breast trim 110 cents and frozen hen breast meat 205 cents.

DOMESTIC TRADING	PRICE RANGE	L.S.T. CODE 1/	WTD AVG PRICE	VOLUME (000)
BREASTS, 4-8 LBS GRADE A 2/				
BREASTS, 4-8 LBS GRADE A--FRESH 2/		R	166.00	30
BREASTS, 4-8 LBS PLANT GRADE 2/		R	114.00	80
DRUMSTICKS, TOM		W	74.00	7
DRUMSTICKS, TOM--FRESH		W	68.64	125
DRUMSTICKS, HEN		F	76.00	2
WINGS, FULL-CUT, TOM		W	67.00	14
WINGS, FULL-CUT, HEN				
WINGS, V-TYPE, TOM				
WINGS, V-TYPE, HEN				
NECKS, TOM		W	52.00	14
NECKS, HEN		F	73.00	21
BREASTS, B/S, TOM 3/		W	200.82	44
BREASTS, B/S, TOM--FRESH 3/	209.00-210.00		209.56	54
THIGH MEAT		W	145.00	11
THIGH MEAT--FRESH	145.00		145.00	20
BREAST TRIM MEAT		R	112.00	50
SCAPULA MEAT		F	112.00	20
WING MEAT WITH SKIN		F	130.00	8
TENDERLOINS		W	185.00	4
DESTRAPPED TENDERS				
DESTRAPPED TENDERS--FRESH	186.00		186.00	40
MECHANICALLY SEPARATED 4/	31.00-34.00		31.43	280
MECHANICALLY SEPARATED--FRESH 4/	33.00		33.00	80
EXPORT TRADING				
DRUMSTICKS, TOMS	66.00-67.00		66.50	540
WINGS FULL-CUT - TOMS	60.00-66.50		61.63	648
WINGS, V-TYPE, TOM	97.00		97.00	162
TAILS	59.00		59.00	40
MECHANICALLY SEPARATED 4/	31.00		31.00	54
THIGH MEAT - FROZEN		F	147.33	81

1/ CODES FOR LAST SIGNIFICANT TRADE (L.S.T.):

M=Monday T=Tuesday W=Wednesday R=Thursday F=Friday

2/ Breasts are bagged; rib, back, and wing meat included; and basted.

3/ Boneless and skinless without tenderloins. 4/ 15-20% fat with skin added.

NATIONAL YOUNG TURKEY PARTS

INCLUDING BULK MEAT AND FROZEN (UNLESS SPECIFIED), CENTS PER LB., DELIVERED FIRST RECEIVERS, PART AND FULL TRUCKLOTS AS OF 02 MAR 2012.

The market on bulk parts was steady, full cut wings weak. Demand and offerings light to moderate. The market on white meat was steady to weak and not fully tested. Demand was light to moderate. Offerings moderate. Trading was slow to moderate with heavy movement into export channels. For domestic: frozen livers 25.5 cents pet food, fresh wing meat 126 cents, frozen hearts 38 cents, frozen tails 50-51 cents, fresh tom necks 47 cents, grade A breast non basted 8-10 lbs. 167 cents, 12-16 lbs. 177 cents, 18-20 lb non basted 190 cents and 20 / up lbs. 166 cents. For export: machine defatted tom gizzards 85-105 cents, fresh thigh meat 143 cents, fresh mechanically separated turkey 31 cents and fresh tom drums 68 cents.

DOMESTIC TRADING	PRICE RANGE	L.S.T CODE 1/	WTD AVG PRICE	VOLUME (000)	WEEKLY WTD AVG PRICE	WEEKLY VOLUME (000)
BREASTS, 4-8 LBS GRADE A 2/						
BREASTS, 4-8 LBS GRADE A--FRESH 2/						
BREASTS, 4-8 LBS PLANT GRADE 2/						
DRUMSTICKS, TOM	72.00-74.00		73.43	35	73.52	42
DRUMSTICKS, TOM--FRESH	67.00-70.00		68.80	110	69.13	405
DRUMSTICKS, HEN		F	76.00	2		
WINGS, FULL-CUT, TOM	64.00-66.00		65.28	40	65.73	54
WINGS, FULL-CUT, HEN	66.00		66.00	42	66.00	42
WINGS, V-TYPE, TOM	98.00-99.00		98.79	24	98.79	24
WINGS, V-TYPE, HEN						
NECKS, TOM	51.00-52.00		51.45	106	51.40	230
NECKS, HEN		F	73.00	21		
BREASTS, B/S, TOM 3/	204.00		204.00	40	202.33	84
BREASTS, B/S, TOM--FRESH 3/		R	209.56	54	208.60	124
THIGH MEAT	145.00		145.00	6	146.61	87
THIGH MEAT--FRESH	143.00-147.00		144.96	285	144.97	305
BREAST TRIM MEAT						
SCAPULA MEAT	108.00		108.00	20	108.00	20
WING MEAT WITH SKIN		F	130.00	8		
TENDERLOINS		W	185.00	4	185.00	4
DESTRAPPED TENDERS						
DESTRAPPED TENDERS--FRESH		R	186.00	40	186.00	40
MECHANICALLY SEPARATED 4/		R	31.43	280	31.43	280
MECHANICALLY SEPARATED--FRESH 4/	31.00-33.00		31.80	576	32.06	736
EXPORT TRADING						
DRUMSTICKS, TOMS	71.00		71.00	40	68.69	796
WINGS FULL-CUT - TOMS	60.00-60.50		60.25	660	60.93	1,308
WINGS, V-TYPE, TOM	94.00-98.00		95.71	378	96.10	540
TAILS	51.00-57.00		55.50	160	56.20	200
MECHANICALLY SEPARATED 4/	31.00-32.00		31.73	148	31.53	202
THIGH MEAT - FROZEN		F	147.33	81		

1/ CODES FOR LAST SIGNIFICANT TRADE (L.S.T.):

M=Monday T=Tuesday W=Wednesday R=Thursday F=Friday

2/ Breasts are bagged; rib, back, and wing meat included; and basted.

3/ Boneless and skinless without tenderloins. 4/ 15-20% fat with skin added.

USDA, AMS, POULTRY PROGRAMS, MARKET NEWS & ANALYSIS

Atlanta, GA - Annie Terry, Officer-in-Charge
Voice (404) 562-5850
Fax (404) 562-5875

Jackson, MS - Gary Brown, Southern States Area Supervisor
Voice (601) 965-4662
Fax (601) 359-1175

Des Moines, IA - Jason Karwal, Officer-in-Charge
Voice (515) 284-4471
Fax (515) 284-4468

Washington, DC - Michael Sheats, Director
Voice (202) 720-6911
Fax (202) 720-2403