



# TURKEY MARKET NEWS REPORT

ISSN 1522-0575

FRIDAY  
OCTOBER 14, 2011  
VOL. 58 NO. 123

U.S. Department of Agriculture	Agricultural Marketing Service	Poultry Programs	Market News and Analysis
--------------------------------	--------------------------------	------------------	--------------------------

## NATIONAL TURKEY MARKET-AT-A-GLANCE

### DOMESTIC MARKET HIGHLIGHTS

The market on frozen 8-16 lb. hens and 16-24 lb. toms is steady with a firm undertone. Fresh and frozen demand was light to moderate. Frozen offerings light. Fresh offerings light for November. Frozen basted equivalent offering prices on a national basis for hens 112.00-117.00 cents shipping point and 16-24 lb. toms 109.00-114.00 cents shipping point for current deliveries. No trading was reported.



The market on bulk parts is steady to firm. Demand moderate to good. Offerings light. The market on white meat is steady. Demand was light to moderate. Offerings light to moderate. The market on thigh meat is firm. Demand was moderate to good. Offerings light and held with confidence. The market on fresh mechanically separated turkey (MST) is steady to barely steady. Demand and offerings light to moderate. Trading for all parts was slow to moderate.

### EXPORT MARKET HIGHLIGHTS

Trading was slow. The market is steady to firm. Demand was moderate to good. Offerings light.

### LIVE TURKEYS SLAUGHTERED W/E 08-Oct-11 (Preliminary)

	YOUNG		YOUNG	OLD	TOTAL
	HENS	TOMS	BREEDERS		TURKEYS
Head	1,974	2,626	32	9	4,641
Avg Wt	17.21	38.56	26.51	29.63	29.38
Last week	1,969	2,678	11	9	4,667
Same wk yr ago	1,956	2,731	39	8	4,734
Avg Wt	17.33	37.65	25.09	31.95	29.86
To-date/2011*	72,596	102,875	844	277	176,592
To-date/2010*	71,738	102,400	864	291	175,293
% Change YTD	1%	0%	-2%	-5%	1%
Ready-to-Cook Weight and Dressing Percentage					
Current week	27,173	81,011	649	204	109,037
Last week	26,889	81,680	228	173	108,970
Same wk yr ago	27,118	82,258	753	197	110,326
To-date/2011*	988,338	3,186,104	16,901	6,593	4,197,936
To-date/2010*	971,095	3,125,194	17,074	7,427	4,120,790
% Change YTD	2%	2%	-1%	-11%	2%
Dressing %	80.0%	80.0%	76.5%	76.5%	

### NUMBER OF TURKEYS SLAUGHTERED IN FEDERALLY INSPECTED PLANTS

	W/E 08-Oct-11 (Preliminary)			Old		Total Turkeys	
	-----Young turkeys-----			Breeders	Avg		
	Thousand	Pct chg	Avg	-Thousand head-	Live wt	Live wt	
	Head	PW	Live wt				
North East	618	0	27.62	(A)	620	27.62	
South Atlantic	684	-7	33.84	(A)	686	33.84	
North Central	2,363	1	31.79	(A)	2,365	31.79	
South Central	680	-6	18.52	(A)	682	18.52	
West	287	24	28.43	(A)	288	28.43	
U.S. total	4,632 (B)	-1	29.38	9	4,641	29.38	
To-date							
2011*	176,315 (B)			277	176,592		
To-date							
2010*	175,002 (B)			291	175,293		

(A) Not published to avoid disclosing individual operations.  
(B) Number of young banded breeder turkeys included: this week 32,000; for the current year to date\* 844,000; for last year to date\* 864,000.

\*Note: Year to-date totals reflect comparable time periods.

\*Note: Year to-date totals reflect comparable time periods.

### SAN FRANCISCO PROCESSED TURKEY DELIVERED TO RESTAURANTS AND INSTITUTIONS

	RANGE
TURKEYS Y HENS	147-169
TURKEYS Y TOMS UNDER 22#	144-169
TURKEYS Y TOMS 22-24#	144-169
TURKEYS Y TOMS 24-26#	146-169
TURKEYS Y TOMS 26 LBS & OVER	148-169

### SOUTHERN CALIFORNIA (L. A. AREA) PROCESSED TURKEY DELIVERED TO RETAILERS

	RANGE
FRESH TURKEYS Y HENS 8-16#	118-128
FRESH TURKEYS Y TOMS 14-24#	
FROZEN TURKEYS Y HENS 8-16#	114-119
FROZEN TURKEYS Y TOMS 14-24#	111-121
FROZEN TURKEYS Y TOMS 24-28#	115-125

**Weekly National Fresh and Frozen Whole Young Turkeys**  
**USDA, Agricultural Marketing Service, Poultry Market News & Analysis Branch**

Weighted Average Prices, cents per pound, F.O.B. Shipper Dock Basis - Week Ending October 14, 2011

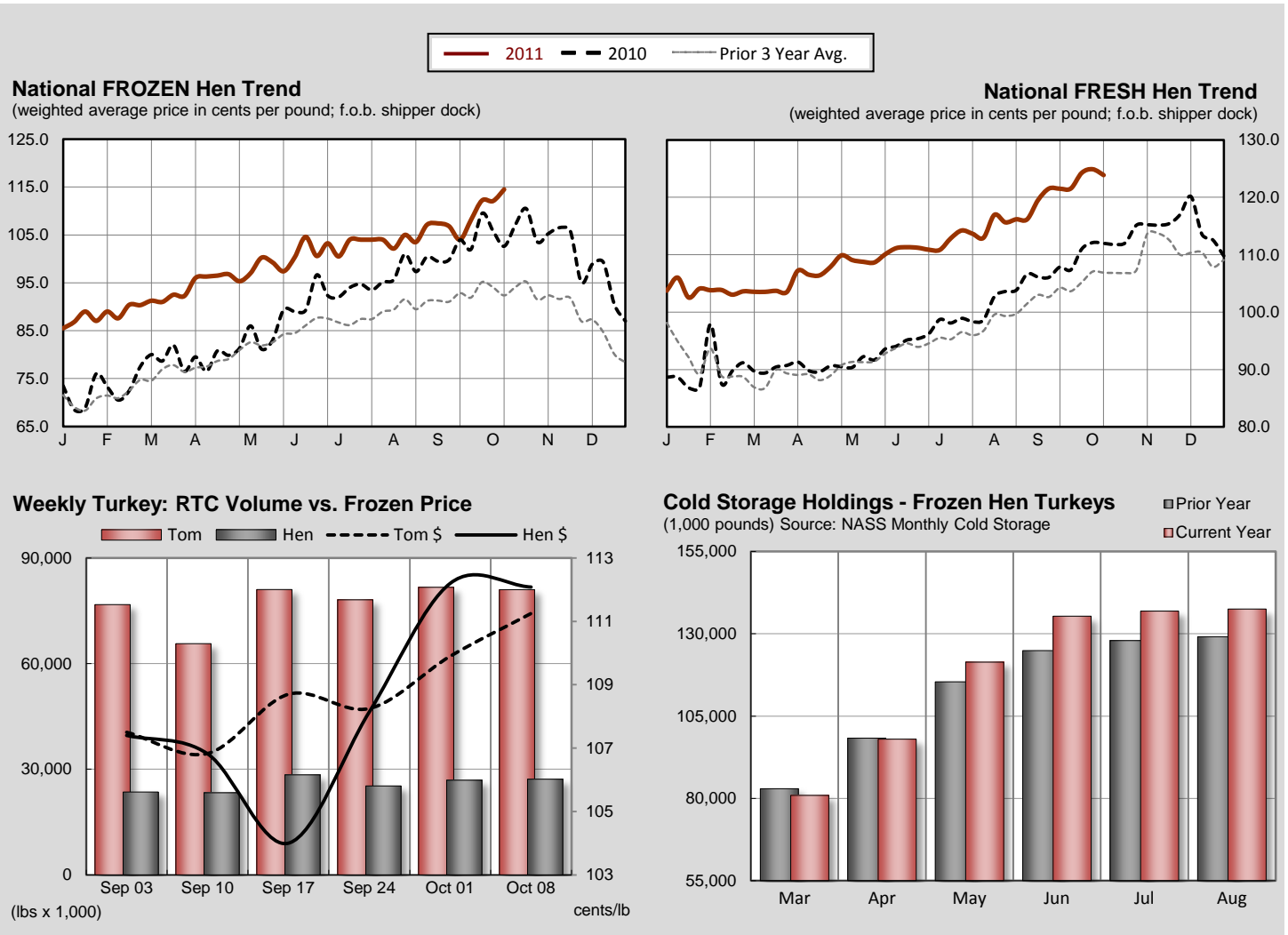
**FROZEN Whole Body Trading** commodity pack or equivalent; minimum 10,000 lb lots, current negotiation for delivery within two weeks

U.S. Grade A - FROZEN	Current Week		Last Week		Last Year		September Averages		
	wtd avg (cents/lb)	volume (000 lbs.)	wtd avg (cents/lb)	volume (000 lbs.)	wtd avg (cents/lb)	volume (000 lbs.)	This Month	Last Month	Last Year
<b>8-16 lb. (Hens)</b>	114.50 <sup>1</sup>		112.08	240	102.63	80	109.79	105.39	102.02
<b>16-24 lb. (Toms)</b>	111.50 <sup>1</sup>		111.25	160	104.75	160	108.87	106.91	100.28

<sup>1</sup> based on offers.

**FRESH Whole Body Turkeys** - with timers; for delivery within the next seven days.

U.S. Grade A - FRESH	Current Week		Last Week		Last Year		September Averages		
	wtd avg (cents/lb)	volume (000 lbs.)	wtd avg (cents/lb)	volume (000 lbs.)	wtd avg (cents/lb)	volume (000 lbs.)	This Month	Last Month	Last Year
<b>Priced At Time Of Sale:</b>									
<b>8-16 lb. (Hens)</b>	123.87	123.2	124.89	118.2	111.79	173.0	122.27	116.91	108.84
<b>16-24 lb. (Toms)</b>	124.24	71.0	125.81	65.0	112.00	70.0	122.67	115.92	108.57
<b>Price To Be Determined:</b>									
<b>8-16 lb. (Hens)</b>	--	5.0	--	2.5	--	5.0	--	--	--
<b>16-24 lb. (Toms)</b>	--	5.0	--	2.5	--	5.0	--	--	--



**NATIONAL YOUNG TURKEY PARTS**

Including bulk meat and frozen (unless specified), cents per lb., delivered first receivers, part and full trucklots as of 13 October, 2011.

The market on bulk parts was steady to firm. Demand was moderate to good. Offerings light. The market on white meat is steady. Demand and offerings were both light to moderate. The market on thigh meat was fully steady instances firm. Demand was moderate. Offerings light. Trading was slow. For domestic: fresh tom full cut wings 86 cents, frozen mixed hen and tom necks 46 cents, frozen tails 51 cents, grade A 10-12 lb. breast 175 cents fresh mechanically separated turkey 21.5 cents for pet food. For export: whole tenders 208 cents delivered to port.

DOMESTIC TRADING	PRICE RANGE	L.S.T. CODE 1/	WTD AVG PRICE	VOLUME (000)
BREASTS, 4-8 LBS GRADE A 2/		T	132.50	80
BREASTS, 4-8 LBS GRADE A--FRESH 2/		R	165.33	30
BREASTS, 4-8 LBS PLANT GRADE 2/				
DRUMSTICKS, TOM	89.00-91.00		90.00	40
DRUMSTICKS, TOM--FRESH	86.00-93.00		89.00	280
DRUMSTICKS, HEN	84.00-87.50		85.36	84
WINGS, FULL-CUT, TOM	91.00		91.00	3
WINGS, FULL-CUT, HEN	84.00-86.50		85.14	44
WINGS, V-TYPE, TOM		R	116.77	36
WINGS, V-TYPE, HEN				
NECKS, TOM	50.00		50.00	3
NECKS, HEN	39.00-42.50		40.75	40
BREASTS, B/S, TOM 3/	259.00		259.00	20
BREASTS, B/S, TOM--FRESH 3/	267.00		267.00	16
THIGH MEAT	136.00-138.00		137.67	48
THIGH MEAT--FRESH		F	136.12	156
BREAST TRIM MEAT	170.00		170.00	4
SCAPULA MEAT	189.00-192.00		190.50	80
WING MEAT WITH SKIN	160.00		160.00	40
TENDERLOINS				
DESTRAPPED TENDERS		F	220.00	24
DESTRAPPED TENDERS--FRESH		R	238.00	40
MECHANICALLY SEPARATED 4/	34.00-35.00		34.50	40
MECHANICALLY SEPARATED--FRESH 4/	31.50-34.00		32.00	200
EXPORT TRADING				
DRUMSTICKS, TOMS	107.00		107.00	108
WINGS FULL-CUT - TOMS				
WINGS, V-TYPE, TOM		R	119.00	216
TAILS	50.00-53.00		51.28	94
MECHANICALLY SEPARATED 4/		F	36.00	80
THIGH MEAT - FROZEN				

1/ CODES FOR LAST SIGNIFICANT TRADE (L.S.T.):

M=MONDAY T=TUESDAY W=WEDNESDAY R=THURSDAY F=FRIDAY

2/ Breasts are bagged; rib, back, and wing meat included; and basted.

3/ Boneless and skinless without tenderloins.

4/ 15-20% fat with skin added.

**NATIONAL YOUNG TURKEY PARTS**

Including bulk meat and frozen (unless specified), cents per lb., delivered first receivers, part and full trucklots as of 14 October, 2011.

The market on bulk parts was steady to firm. Demand was moderate to good. Offerings light. The market on white meat is steady and not fully tested. Demand and offerings were both light to moderate. The market on thigh meat was firm. Demand was moderate to good. Offerings light. Trading was slow. For domestic: fresh tom full cut wings 83-84 cents and machine defatted tom gizzards 100 fob. For export: fresh tom drums 85 cents delivered to port.

DOMESTIC TRADING	PRICE RANGE	L.S.T. CODE 1/	WTD AVG PRICE	VOLUME (000)	WEEKLY WTD AVG PRICE	WEEKLY VOLUME (000)
BREASTS, 4-8 LBS GRADE A 2/		T	132.50	80	132.50	80
BREASTS, 4-8 LBS GRADE A--FRESH 2/	145.00-189.00		165.33	30	165.33	30
BREASTS, 4-8 LBS PLANT GRADE 2/						
DRUMSTICKS, TOM	93.00		93.00	40	91.68	91
DRUMSTICKS, TOM--FRESH	90.00		90.00	120	88.82	440
DRUMSTICKS, HEN		R	85.36	84	85.61	94
WINGS, FULL-CUT, TOM		R	91.00	3	90.20	50
WINGS, FULL-CUT, HEN		R	85.14	44	85.62	54
WINGS, V-TYPE, TOM	118.00		118.00	80	118.00	80
WINGS, V-TYPE, HEN						
NECKS, TOM	50.00-54.00		52.77	130	52.18	304
NECKS, HEN		R	40.75	40	41.55	50
BREASTS, B/S, TOM 3/		R	259.00	20	259.00	27
BREASTS, B/S, TOM--FRESH 3/		R	267.00	16	267.00	96
THIGH MEAT	148.00		148.00	10	139.08	65
THIGH MEAT--FRESH	137.00-143.00		138.96	220	138.96	220
BREAST TRIM MEAT		R	170.00	4	170.00	4
SCAPULA MEAT	192.00		192.00	5	190.59	85
WING MEAT WITH SKIN		R	160.00	40	160.00	40
TENDERLOINS						
DESTRAPPED TENDERS	218.00		218.00	200	218.00	200
DESTRAPPED TENDERS--FRESH						
MECHANICALLY SEPARATED 4/		R	34.50	40	34.50	40
MECHANICALLY SEPARATED--FRESH 4/	34.00		34.00	36	32.03	356
<b>EXPORT TRADING</b>						
DRUMSTICKS, TOMS	120.00		120.00	108	113.50	216
WINGS FULL-CUT - TOMS						
WINGS, V-TYPE, TOM						
TAILS		R	51.28	94	51.61	174
MECHANICALLY SEPARATED 4/		F	36.00	80		
THIGH MEAT - FROZEN	150.00		150.00	40	150.00	40

1/ CODES FOR LAST SIGNIFICANT TRADE (L.S.T.):

M=MONDAY T=TUESDAY W=WEDNESDAY R=THURSDAY F=FRIDAY

2/ Breasts are bagged; rib, back, and wing meat included; and basted.

3/ Boneless and skinless without tenderloins.

4/ 15-20% fat with skin added.

---

**USDA, AMS, POULTRY PROGRAMS, POULTRY MARKET NEWS AND ANALYSIS OFFICES**

Washington, DC	Voice	(202)720-6911	Michael Sheats
	Fax	(202)720-2403	(Director)
Atlanta, GA	Voice	(404)562-5850	Annie Terry
	Fax	(404)562-5875	(Officer-In-Charge)
Jackson, MS	Voice	(601)965-4662	Gary Brown
	Fax	(601)359-1175	(Southern States Area Supervisor)
Des Moines, IA	Voice	(515)284-4471	Jason Karwal
	Fax	(515)284-4468	(Officer-In-Charge)