



NATIONAL EGG REVIEW



Prices declined sharply in New York and all other regions this period. Trade sentiment was weak. Retail demand ranged from light to moderate at best. Food service movement was slow. Supplies in all regions were reported as fully adequate to ample for trade requirements. This week breaking stock prices, along with checks and undergrades, sharply decreased. Offerings were adequate to ample. Demand was light to instances moderate. Breaking schedules were full-time to over-time. The trade sentiment remained barely steady to weak. North central regional light hen removal costs were unchanged. Demand was moderate to good, with offerings continuing adequate to ample. Schedules were full-time. The trade sentiment was steady.

PRICES TO RETAILERS, SALES TO VOLUME BUYERS, USDA GRADE A AND GRADE A, WHITE EGGS IN CARTONS, PRICES DELIVERED TO WAREHOUSE, CENTS PER DOZEN.

MIDWEST REGIONAL Prices to producers in IA-MN-WI were lower for large and medium and unchanged for small. Midwest delivered prices were unchanged with asking prices for next week trending sharply lower. Trade sentiment was weak. Cartoned egg sales were light to moderate at best. Loose egg movement was slow. Supplies were fully adequate to ample and building. Central States breaking stock prices were lower. Offerings were adequate to ample for light to instances moderate demand. Schedules full-time to extended. Trade sentiment barely steady to weak.

Table with 3 columns: RANGE, MOSTLY, and egg sizes (EXTRA LARGE, LARGE, MEDIUM). Includes Midwest Area list.

NORTHEAST REGIONAL Prices were unchanged, but all sizes were trending significantly lower. Trade sentiment was generally weak. Demand was mostly light, however reported as fairly good to good in spot locations. Supplies were fully adequate to ample for buyer needs. Eastern region breaking stock floor stocks were sufficient to fully adequate for normal to heavy schedules. Light type hen offerings were at least sufficient for a moderate to fairly good demand.

Table with 3 columns: RANGE, MOSTLY, and egg sizes (EXTRA LARGE, LARGE, MEDIUM). Includes Northeast Area list.

Table with 4 columns: REGIONS, EX LARGE, LARGE, MEDIUM. Includes Combined Regional title and APR 04, 2008 date. Includes note about simple weekly averages.

Table with 4 columns: egg sizes (Large, Medium), 04-08-08, 04-01-08, 04-10-07. Includes Iowa-Minnesota-Wisconsin title.

WEEKLY SHELL EGG INVENTORY REPORT

STOCKS ON HAND AVAILABLE FOR MARKETING 1/ (30 DOZEN CASES-IN THOUSANDS)

Table with 8 columns: APR 07, 2008, Northeast, Cent, So, Atl, Pacific, 5-Area. Rows include Jumbo, Ex Lge, Large, Medium, Small, Misc, Ungraded, Total Percent.

Table with 4 columns: TOTAL, Number of Cases, Percent Change, Number of Cooperators. Rows include Shell Egg, Shell Egg Breaking Stock, Total Shell Egg.

1/ Information supplied by a universe of 152 cooperators who normally have stocks on hand each Monday A.M. and is on the basis of matched plants reporting in both the current and previous weeks. This is a representative sample of the U.S. inventory and includes eggs packed for export when in cooperator's coolers.

No valid comparison can be made with year ago or previous months' figures due to changes in number of plants surveyed, holidays falling in different weeks or changes in size of plant operations.

Table with 2 columns: Region, list of states. Rows include Northeast, North Central, South Central, South Atlantic, Pacific.

EGGS PROCESSED UNDER FEDERAL INSPECTION

W/E 05-APR-2008 (Lbs In Thousands) (Excludes Ingredients)

Total	Cases Broken	Liquid Whole	Liquid White	Liquid Yolk	Dried	Inedible
CW	1,344,132	33,480	12,372	6,781	2,722	4,566
PW	1,280,121	31,980	11,829	6,270	2,641	4,461
LY	1,254,483	31,024	11,755	6,341	2,292	4,534
% Chg PWK	5%	5%	5%	8%	3%	2%
% Chg LY	7%	8%	5%	7%	19%	1%
2008	17,346,687	433,585	157,288	84,292	35,749	60,321
2007	17,081,465	425,125	158,944	85,087	33,717	60,094
% Chg YTD	2%	2%	-1%	-1%	6%	0%
Average Yield Per Case -Current Previous Last						
		Week	Week	Week	Year	
(Inedible Included)		42.55	42.61	42.77		
(Inedible Excluded)		39.16	39.12	39.16		

IN-LINE PRODUCTION (of total production; lbs. in thousands; may include limited amount of off-line source material)

	CASES BROKEN		LIQUID WHOLE	
	Cases	% of Total	Lbs.	% of Total
CURRENT WEEK	666,344	49.6%	17,745	53.0%
PREVIOUS WEEK	652,839	51.0%	17,904	56.0%
LAST YEAR	633,159	50.5%	17,823	57.4%

BROILER HATCHERY

19 Selected States STATE	Broiler Eggs Set In		Broiler Chicks Placed	
	MAR 29	APR 05	MAR 29	APR 05
	Thousand			
AL	*32,323	32,572	*22,103	21,879
AR	26,038	26,530	23,607	23,798
DE	*4,065	4,089	*5,203	5,157
FL	1,419	1,413	1,353	1,291
GA	34,663	34,910	*28,943	28,965
KY	8,127	7,851	5,952	6,210
LA	3,984	3,937	3,730	3,715
MD	*8,939	9,095	*5,561	6,448
MS	18,863	18,926	*17,262	17,340
NC	*20,119	20,312	*16,196	16,072
OK	6,135	6,394	4,913	5,173
PA	*4,231	4,307	*3,240	3,446
SC	5,436	5,501	4,877	5,100
TX	*15,732	15,683	*13,573	13,099
VA	6,350	6,269	5,448	4,694
CA, MO, TN, & WV	*19,974	20,028	*18,306	17,739
19 State Total	*216,398	217,817	*180,267	180,126
Previous Year Total	216,641	219,106	175,861	176,469
Pct. of Prev. Year	100	99	103	102

*Revised
Source: NASS, USDA

WEEKLY FRYERS AVAILABLE FOR MARKETING

Based on the preliminary chick placements, the number of fryers available for marketing during the week ending 17-May-08 is estimated at 166.0 million head. This compares to 166.4 million head the previous week and to 165.8 million head the same week a year ago, when the slaughter was 166.5 million head and the composite weighted average price was 81.76 cents per pound.

TRAILER LOAD EGG SALES – WEEKLY WTD AVG PRICES

(CNTS/DOZ) NATIONAL TRADING FOR 04/03/08 - 04/09/08

CURRENT LDS 79.00 FUTURE LDS 45.25 TOTAL LDS 124.25

CLASS	SE		NE		MW		LOADS
	ORG	DST	ORG	DST	ORG	DST	
GNR W 1	100.50	97.00	99.25	101.00	--	--	10.00
GNR W 3	--	91.00	--	--	--	--	2.00
GNR W 4	--	89.00	--	--	--	--	1.00
GL W J	--	--	109.50	112.00	109.28	--	5.50
GL W XL	106.00	114.61	110.81	111.97	101.65	--	38.25
GL W LG	--	113.03	101.25	105.67	96.42	--	23.00
GL W MD	--	--	92.80	89.50	82.70	--	15.00
GL W SM	--	--	80.88	82.38	--	--	4.00
NRBS - 50	--	--	--	--	--	92.00	6.00
NRBS - 48	--	85.00	86.17	87.73	82.40	91.31	57.00

MOVEMENT OF EGGS INTO RETAIL CHANNELS W/E 05-APR-08

Selected Consuming Centers	CW		PW		PCT CHG	
	Cases, in thousands		PW	LY		
Atlanta	19.6		22.5		-13	-46
Boston	2.6		2.4		8	-40
Chicago	55.5		78.4		-29	-39
Detroit	11.9		13.7		-13	-28
Los Angeles	89.4		86.2		4	-18
New Orleans	5.8		5.7		2	-2
New York	31.5		26.5		19	-13
St. Louis	36.5		48.3		-24	18
San Francisco	14.5		14.4		1	-33
Total	267.3		298.1		-10	-20
4 Week Moving Avg.	318.2					

LIVE TURKEYS SLAUGHTERED W/E 05-APR-08

	YOUNG		YOUNG BREEDERS	OLD	TOTAL TURKEYS
	HENS	TOMS			
Head	1,923	2,646	37	25	4,631
Avg Wt	16.26	39.18	28.28	26.96	29.51
Last week	1,939	2,660	13	14	4,626
Same wk yr ago	1,865	2,280	11	3	4,159
Avg Wt	16.54	38.11	26.62	45.52	28.41
To-date/2008	26,253	38,308	238	147	64,946
To-date/2007	25,664	34,973	189	55	60,881

NUMBER OF TURKEYS SLTRD IN FEDERALLY INSP PLANTS

W/E 05-APR-08

	(Preliminary)			Old Banded	Total Turkeys
	---Young turkeys---		Avg Live wt		
	Thousand Head	Pct chg PW			
North East	807	2	24.74	(A)	812 24.74
South Atlantic	694	11	32.57	(A)	699 32.57
North Central	2,025	-4	35.31	(A)	2,030 35.31
South Central	807	3	18.34	(A)	812 18.34
West	273	-6	26.07	(A)	278 26.07
U.S. total	4,606(B)	0	29.51	25	4,631 29.51
To-date					
2008	64,799(B)				147 64,946
To-date					
2007	60,826(B)				55 60,881

(A) Not published to avoid disclosing individual operations.
(B) Number of young banded breeder turkeys included: this week 37,000; for the current year to date 238,000; for last year to date 189,000.

LIVE POULTRY SLTRD UNDER FEDERAL INSPECTION

(PRELIMINARY) W/E 05-APR-2008	Young Chickens	Light Hens	Heavy Hens	Total Hens	Ducks
-----Thousands-----					
Head	166,456	1,561	1,482	3,043	413
Avg Wt	5.56	3.46	7.90	5.62	6.86
Last week	160,207	1,647	1,568	3,215	502
Same wk yr ago	154,029	1,117	1,422	2,539	551
Avg Wt	5.43	3.16	7.83	5.78	6.41
To-date/2008	2,278,554	19,426	20,793	40,219	6,401
To-date/2007	2,187,088	15,671	18,915	34,586	7,317

(A) The estimated number of fryers available for marketing based on the 2-week revised average chick placements 6 to 7 weeks earlier was 167.4 million head. Estimated U.S. slaughter for this period was 168.5 million head, or 1.1 million more than estimated available.

**ESTIMATED U.S. FRYER SLAUGHTER/
FRYER AVAILABILITY COMPARISON**

Week Ending	Million Head Slaughtered	Million Head Available	Pct	Avg Wt
Mar 1	167.9	168.4	100%	5.49
8	166.5	167.6	99%	5.52
15	168.4	166.4	101%	5.50
22	162.4	165.9	98%	5.45
29	162.2	166.6	97%	5.59
Apr 5	168.5	167.4	101%	5.56
Year to date	2306.3	2330.0	99%	
Apr 12		167.4		
19		168.1		

ESTIMATED U.S. LIVE POULTRY SLAUGHTER

UNDER FEDERAL INSPECTION FOR WEEK ENDING 12-APR-08

Class	Current Week	Previous Week
	04/12/08 (1)	04/05/08
----- Thousand head -----		
Broiler/fryer	168,048 (2)	166,051
Light hens	1,696	1,644
Heavy hens	1,503	1,471
Total	171,247	169,166

(1) ESTIMATED

(2) The estimated number of broiler-fryers available for slaughter the week ending 12-Apr-08 is 167.4 million head compared to 161.3 million head slaughtered the same week last year. The estimated U.S. slaughter this week is 168.4 million head or 1.0 million more than estimated available. For the week of 19-Apr-08 the estimated available is 168.1 million head.

FINAL BROILER/FRYER REPORT

Prices negotiated for truck-lot sales of ready-to-cook ice-packed broiler/fryers (includes branded product) to be delivered to first receivers at major market centers week of: 07-APR-2008

(cents per lb)

	U.S. GRADE A			COMPOSITE		
	MAJ	WTD AVG	LDS	WTD AVG	LDS	
Chicago	72.00-75.00	73.96	29	67.19	70	
Los Angeles	90.00	88.75	59	86.14	135	
New York	73.00-76.00	74.60	20	75.35	50	

COMPOSITE WTD AVG PRICES FOR RTC BROILER/FRYERS

WEEKLY	Change from		
07-APR-2008	31-MAR-2008	31-MAR-2008	09-APR-2007
77.86	1.00	76.86	78.73
NUMBER OF LOADS	535		

WHOLE YOUNG TURKEYS, FROZEN 1/, CONSUMER SIZES, COMMODITY PACK OR EQUIVALENT, US GRADE A, CENTS PER LB, DELIVERED (MINIMUM 10,000 LB LOTS)

CURRENT SHIPMENTS 2/ 8-16 LB HENS	OFFERS	SALES	WTD AVG	LBS (000)
EASTERN REGION 3/	84-86	86	86.00	40
CENTRAL REGION 4/	84-86	85	85.00	10
WESTERN REGION 5/	84-86	-	-	-
16-24 LB TOMS				
EASTERN REGION	84-86	-	-	-
CENTRAL REGION	84-86	-	-	-
WESTERN REGION	84-86	-	-	-

1/ May include product stored at temperatures in range of 1 to 25 degrees F.

2/ Includes product priced for shipment within 14 days. 3/ Includes product with 3 percent broth basting. 4/ Includes product with 3-6 percent broth basting. 5/ Includes products with 6 percent broth basting.

WEEKLY COLD STORAGE HOLDINGS -

Selected Centers (Inc. Gov't Stocks)	(In Thousands)		
	Frozen Eggs Lbs	Processed Turkeys Lbs	Processed other Poultry Lbs
AM 04/07/08	2,951	91,277	72,920
AM 03/01/08	3,100	89,106	76,373
CHG	-149	2171	-3453
PCT CHG	-5%	2%	-5%

Based on the historical relationship of the preliminary U.S. Cold Storage holdings report of February 29, 2008 and the selected centers storage report, the expected U.S. holdings on April 1, 2008 are:

Frozen Eggs	15 MIL LBS PLUS OR MINUS	5%
Processed Turkeys	465 MIL LBS PLUS OR MINUS	5%
Processed Other Poultry	713 MIL LBS PLUS OR MINUS	5%

HEN MARKETS**HEAVY TYPE**

(7 pounds and up)* FINAL PRICE, CENTS PER LB., GENERALLY FOR SLAUGHTER THE WEEK OF 07-APR-08

REGIONS	RANGE	MAJORITY	WTD AVG
Southeast (1)	7-12.5 CENTS/LB.		9.73
Southeast (2)		TFEWR	
South Central (1)	7-12.75 CENTS/LB.		9.45

(1) At Farm Buyer Loading (2) At Farm Producer Loading

*Weights under 7 lbs. subject to discount.

LIGHT TYPE - REMOVAL COSTS

Cents per head, generally for removal within the next 10 days, (includes handling, freight and any other charges, weights average about 3.50 pounds) 04-APR-08

REGIONS	RANGE	MAJORITY
Eastern	3-12	5-8
South Central	Too Few To Report	
North Central	0-10.5	0-5

COMMERCIAL EGG MOVEMENT (Receipts From Producers)

W/E 05-APR-2008	Cases (In thousands)	% Change From	
REGIONS		LW	LY
North Atlantic	172.0	-6	-5
East North Central	563.8	-4	-10
West North Central	292.4	-3	5
South Atlantic	170.5	-2	-10
South Central	49.3	-6	-19
West	186.6	0	-14
Total	1434.6	-3	-8
Matched plants reporting		81	81

Areas Covered:

North Atlantic (ME, VT, MA, RI, CT, NH, NY, PA, NJ, MD, DE)

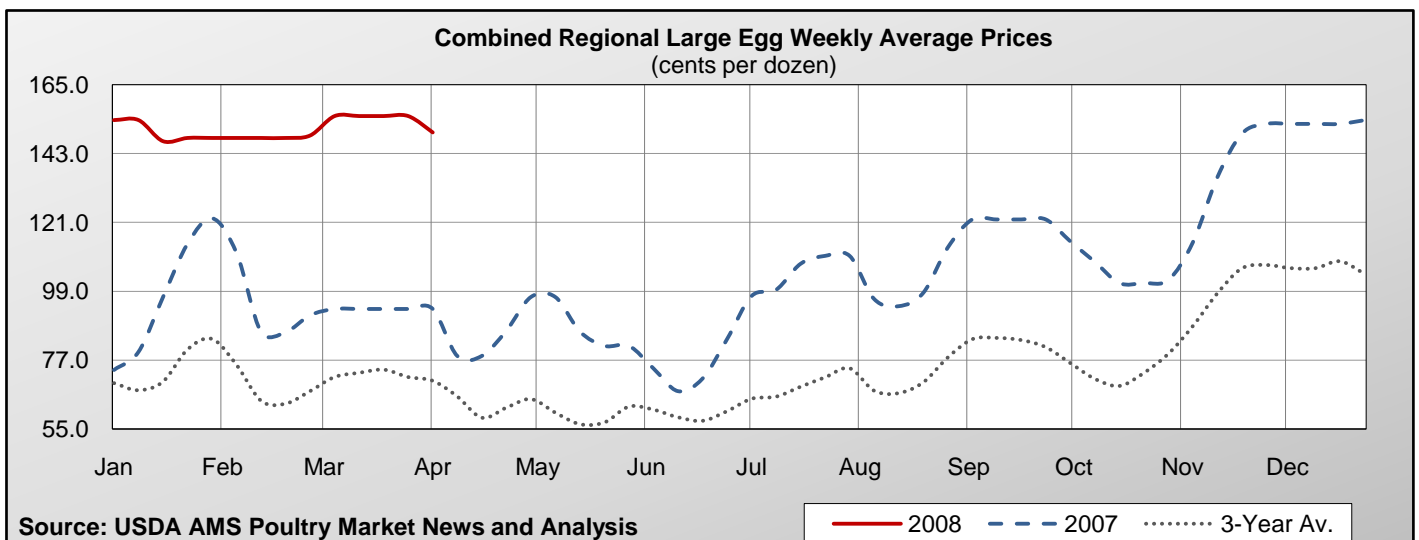
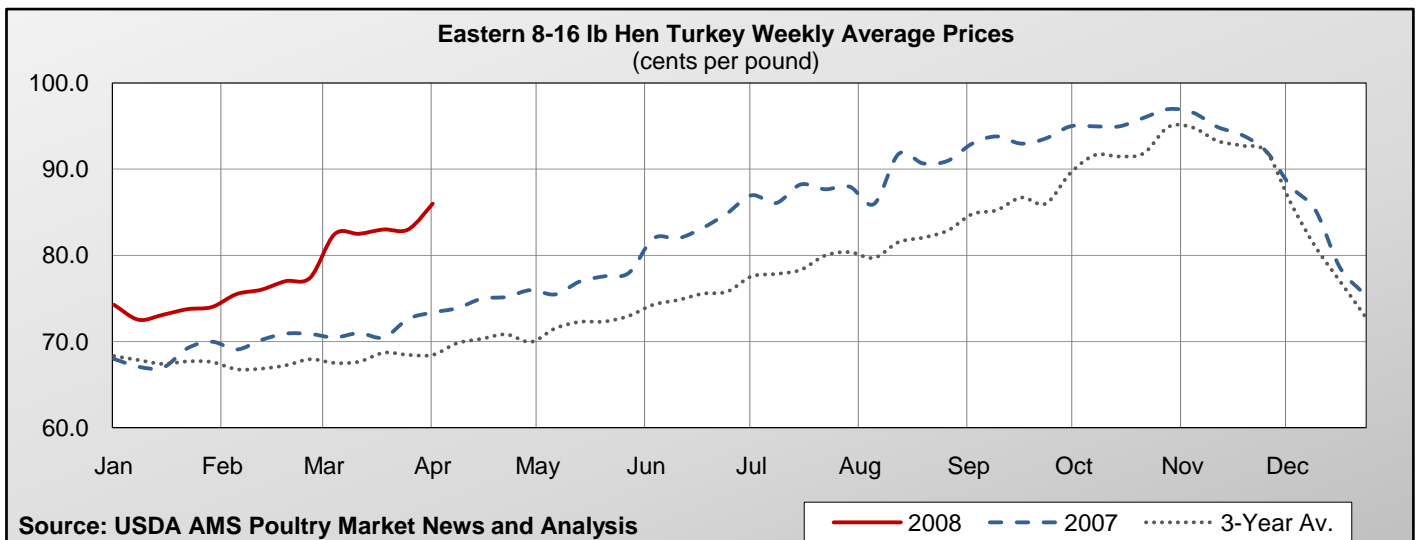
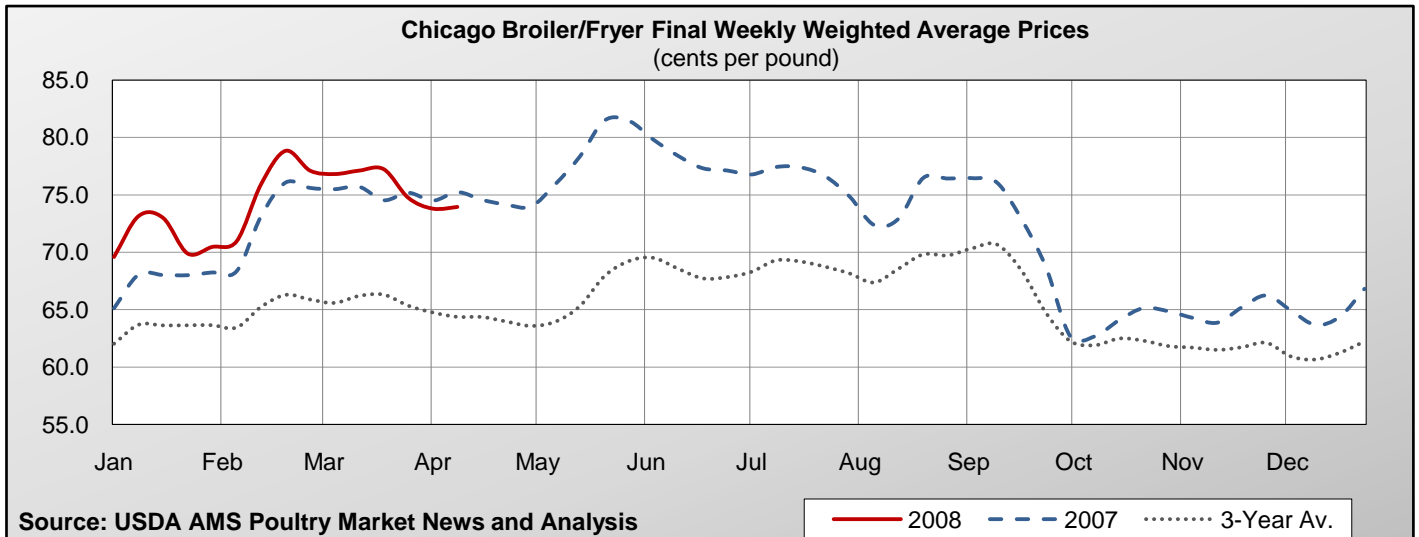
East North Central (WI, IL, MI, OH, IN)

West North Central (IA, MN, MO, KS, SD)

South Atlantic (SC, NC, VA, GA, FL, KY)

South Central (TN, AL, AR, MS, OK)

West (CA, CO, WA, OR, UT)



USDA, AMS, POULTRY PROGRAMS, POULTRY MARKET NEWS OFFICES

Washington, DC	Voice	(202)720-6911
Michael Sheats, Chief	Fax	(202)720-2403
Atlanta, GA	Voice	(404)562-5850
Annie Terry, Officer-In-Charge	Fax	(404)562-5875
Jackson, MS	Voice	(601)965-4662
Gary Brown, Southern States Area Supervisor	Fax	(601)359-1175
Des Moines, IA	Voice	(515)284-4471
Mary L. Adkins, Officer-In-Charge	Fax	(515)284-4468
	Recorded	(515)284-4545
Long Beach, CA	Voice	(562)388-7337
Nettie Andry	Fax	(562)432-8295
	Recorded	(213)534-1335